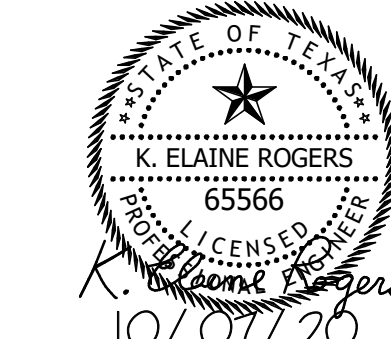




DEPARTMENT OF AVIATION  
 RECOMMENDED:  
 HOUSTON AIRPORT SYSTEM  
 DIRECTOR OR DESIGN REPRESENTATIVE  
**HAS TIP - 20 - 195 - IAH**

PROJECT NAME  
**IAH TERMINAL A SIGNAGE & WAYFINDING**

REGISTRATION  
 Copyright © 2020  
 Henderson + Rogers, Inc.  
 TBPE Firm Registration No. 2194



PROJECT LOCATION  
**IAH TERMINAL A**  
**2800 N. TERMINAL RD.**  
**HOUSTON, TX 77032**

DRAWING HISTORY

NO.	DESCRIPTION	DATE
1	100% CONSTRUCTION DOCUMENTS	10-07-20

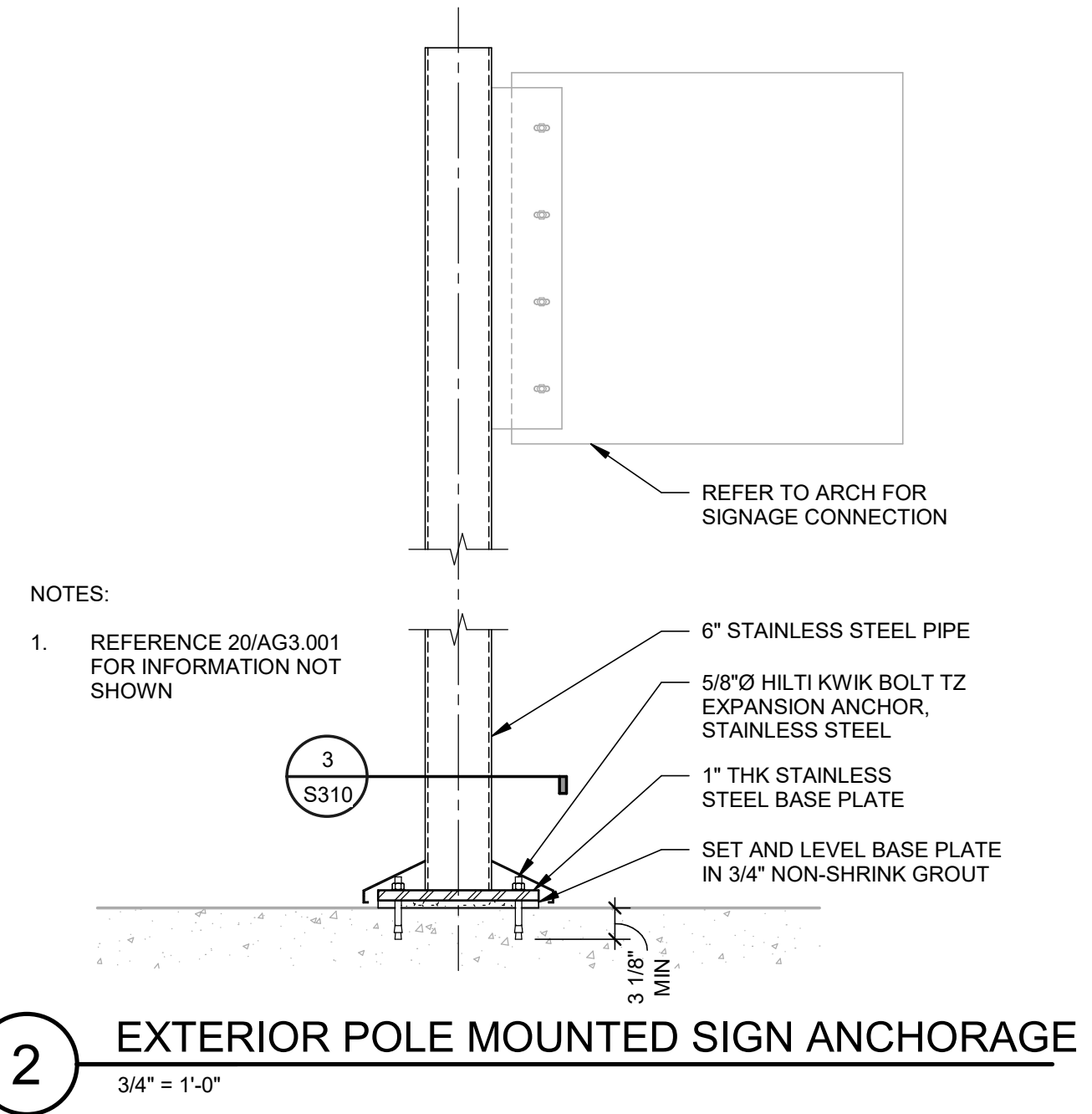
PROJECT NUMBER  
**1003770**

SHEET TITLE  
**DETAILS**

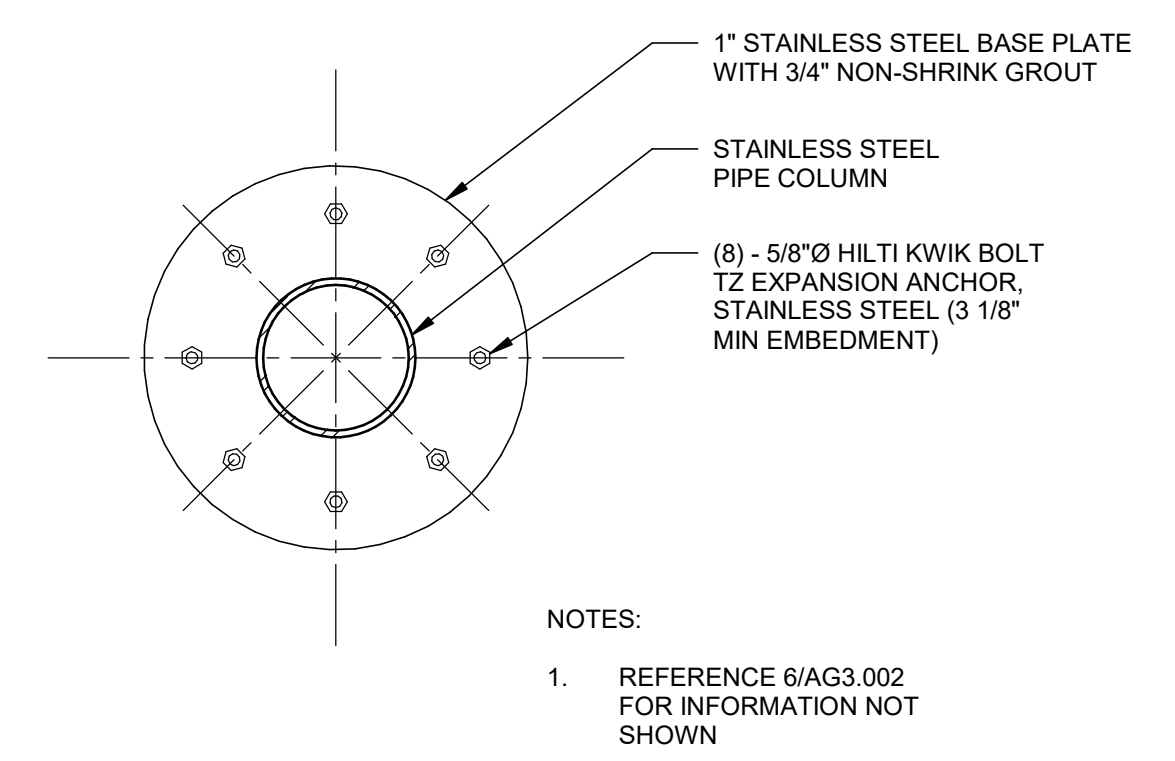
SHEET NUMBER

**S310**

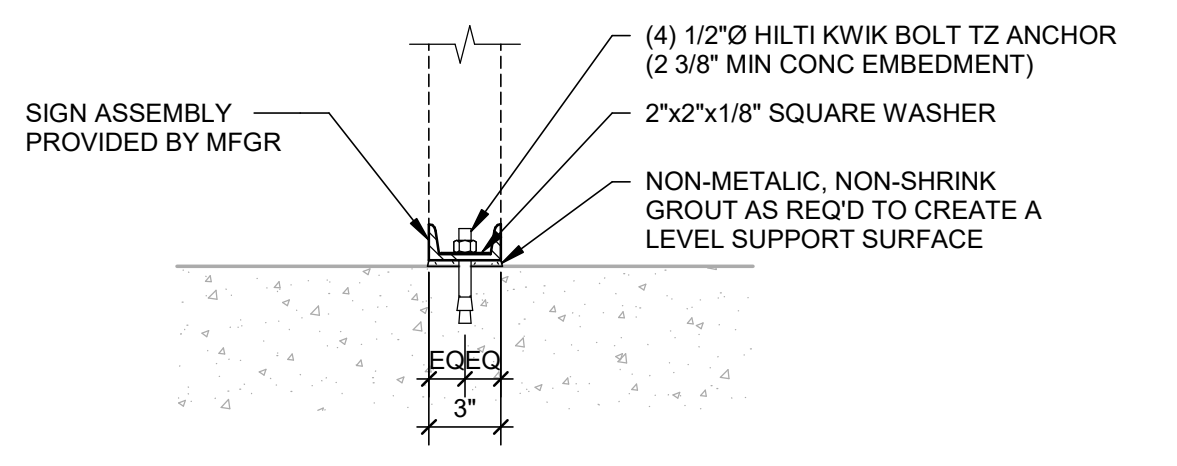
NOTES:  
 1. EXTERIOR SIGNAGE HAS BEEN DESIGNED AND ANALYZED FOR WIND SPEEDS AS DESCRIBED IN THE GENERAL NOTES



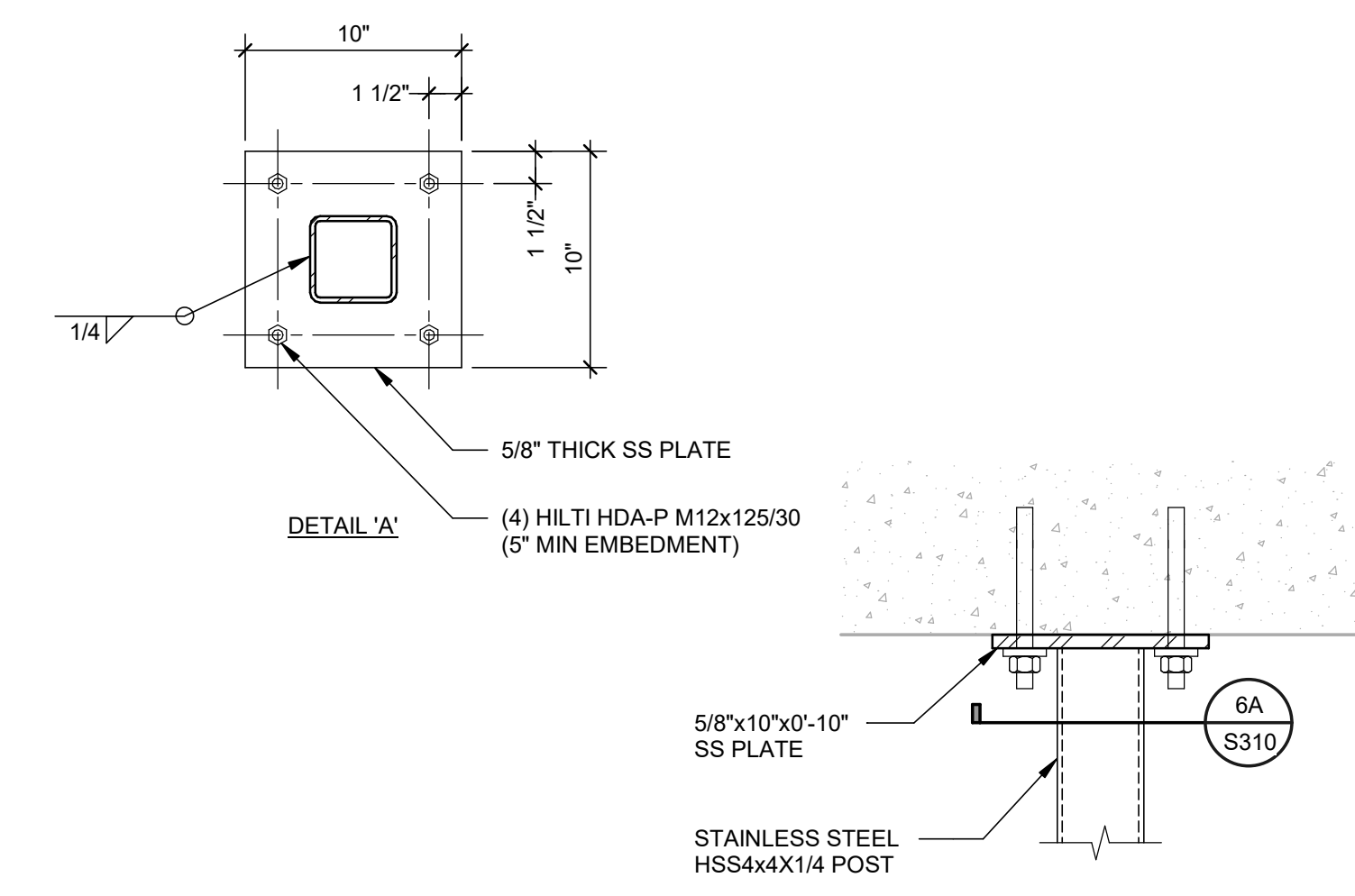
**2** EXTERIOR POLE MOUNTED SIGN ANCHORAGE  
 3/4" = 1'-0"



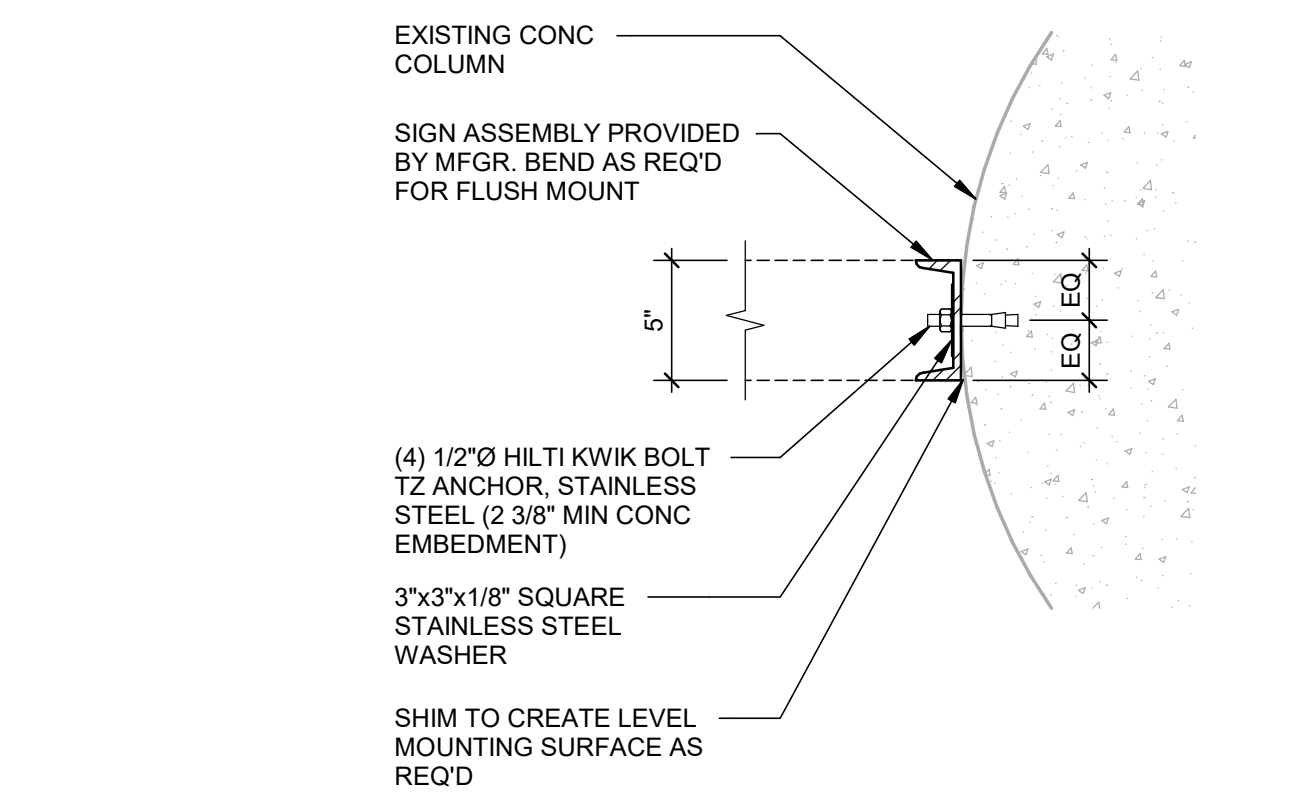
**3** EXTERIOR POLE BASE PLATE  
 1 1/2" = 1'-0"



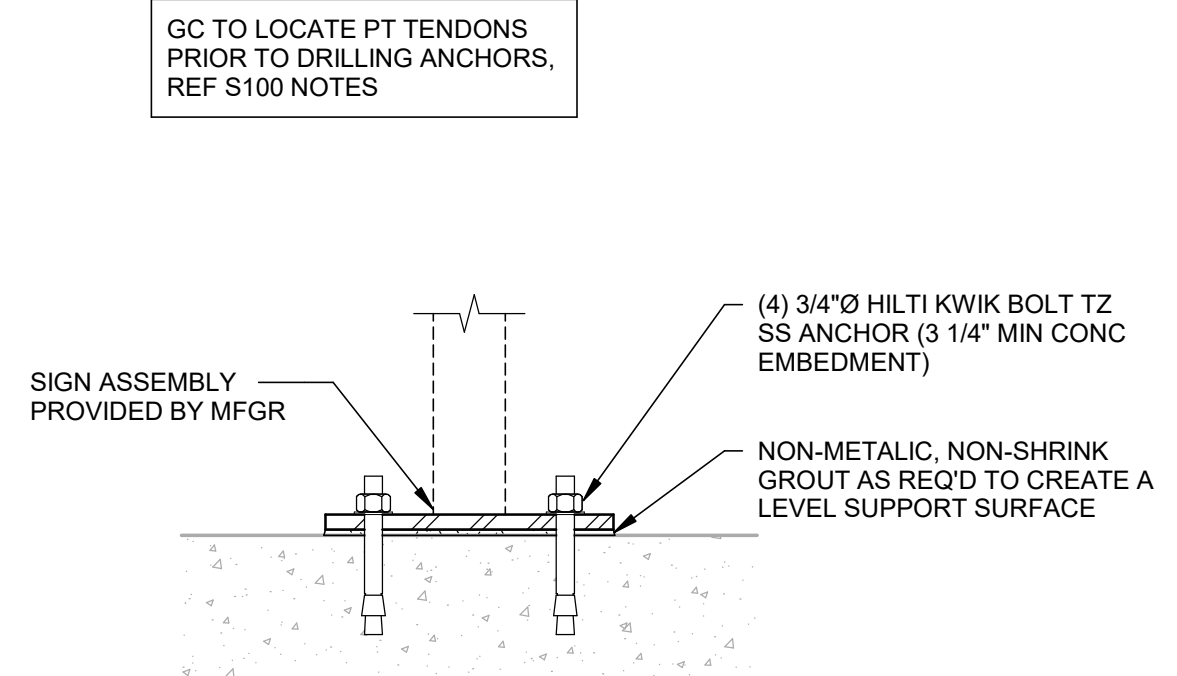
**4** FLOOR MOUNTED SIGN ANCHORAGE  
 1 1/2" = 1'-0"



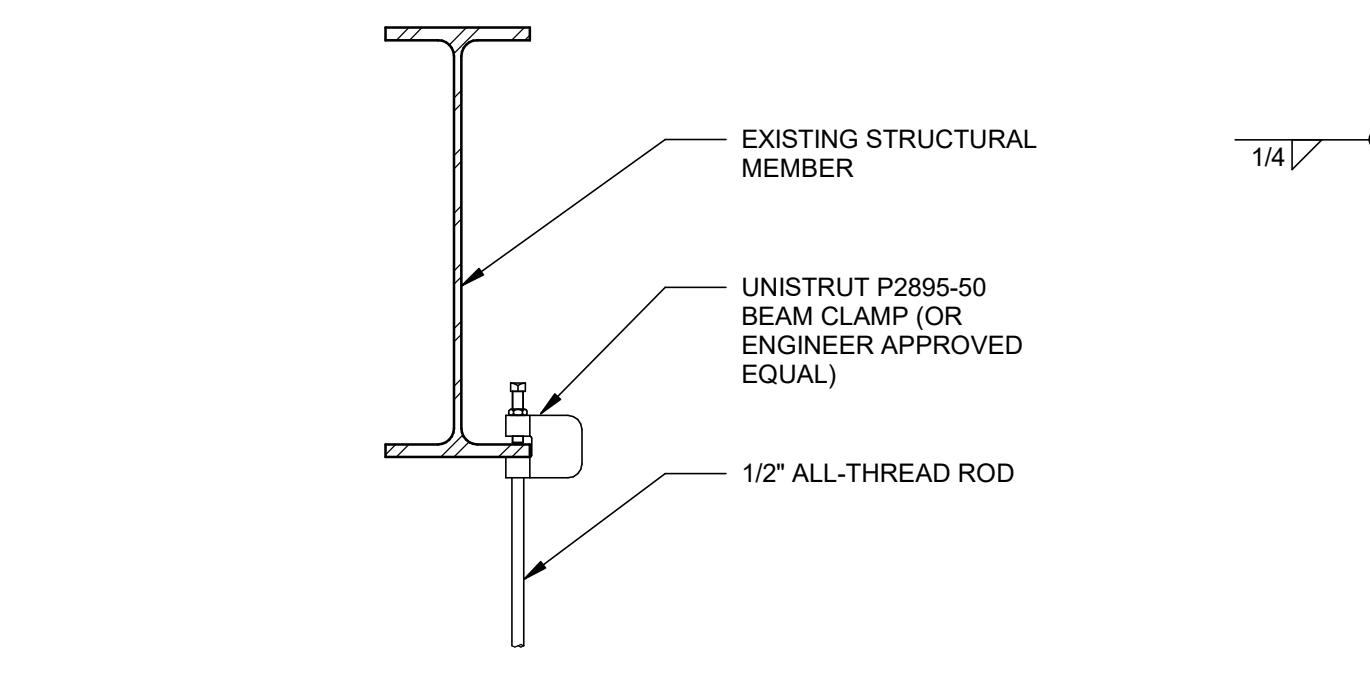
**6** EXTERIOR HANGING SIGN ANCHORAGE  
 REF 3-ID.15  
 1 1/2" = 1'-0"



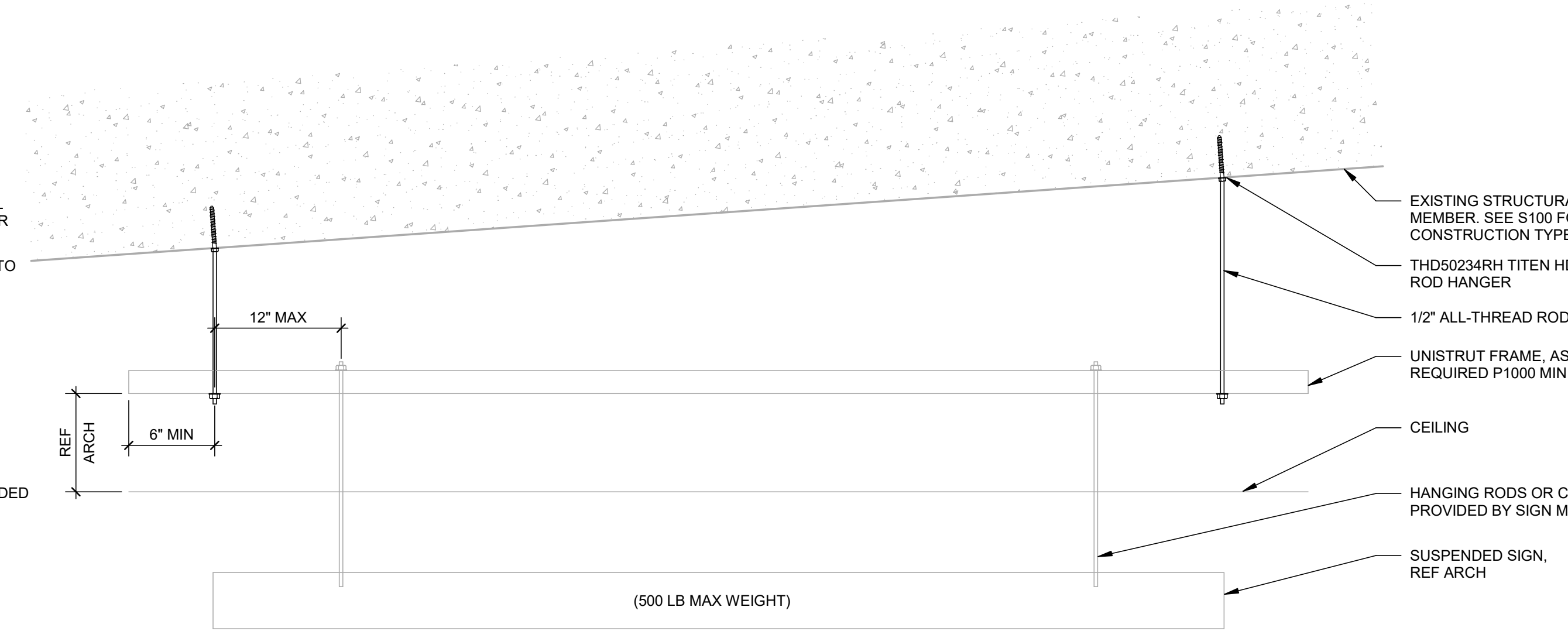
**5** FLAG TYPE SIGN ANCHORAGE  
 REF 3-ID.41-S  
 1 1/2" = 1'-0"



**8** FLOOR MOUNTED DIRECTORY KIOSK ANCHORAGE  
 1 1/2" = 1'-0"



**7** SECTION  
 1 1/2" = 1'-0"



**10** TYP INTERIOR HANGING SIGN ATTACHMENT FRAME - CONCRETE STRUCTURE  
 3/4" = 1'-0"



**12** TYP INTERIOR HANGING SIGN ATTACHMENT FRAME - STEEL STRUCTURE  
 3/4" = 1'-0"

NOTE:  
 IF REQUIRED, UNISTRUT FRAME TO BE DESIGNED AND SEALED AS DELIGATED DESIGN

NOTE:  
 IF REQUIRED, UNISTRUT FRAME TO BE DESIGNED AND SEALED AS DELIGATED DESIGN

FILENAME: G:\Users\john.moore\Documents\19002\_TERMINAL A SIGNAGE\_R19\_imorekx2yp.rvt  
 STAMP: 10/6/2020 2:43:17 PM