



# IAH Terminal Redevelopment Program (ITRP) Update

## Economic Development Committee Meeting

May 26<sup>th</sup>, 2022

# Contents

---

1. ITRP Overview
2. International Terminal - North Terminal & Concourse Construction Photos
3. International Terminal - Central Processor Construction Photos
4. Enabling Utilities Landside (EUL) Project
5. ITRP Upcoming Council Actions

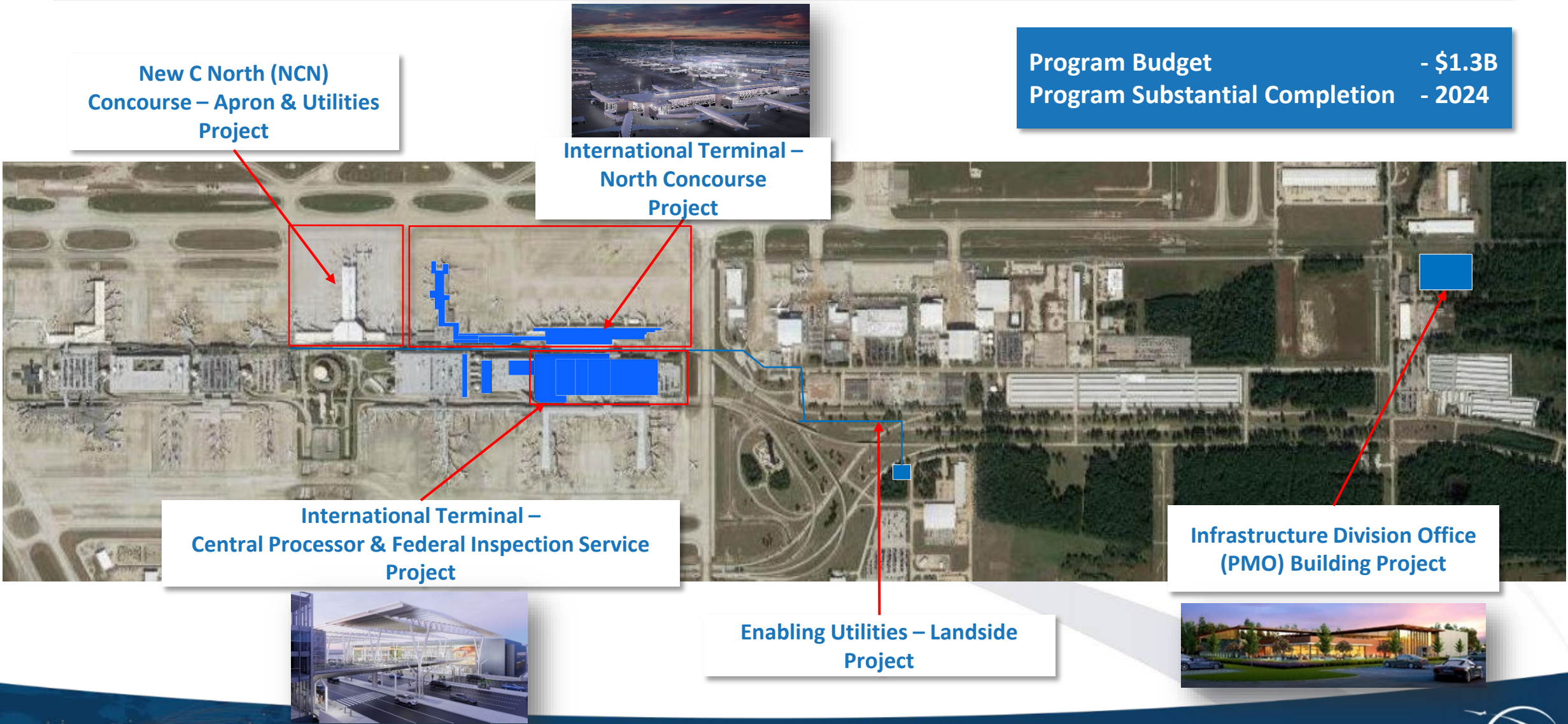


# IAH Terminal Redevelopment Program (ITRP) Overview



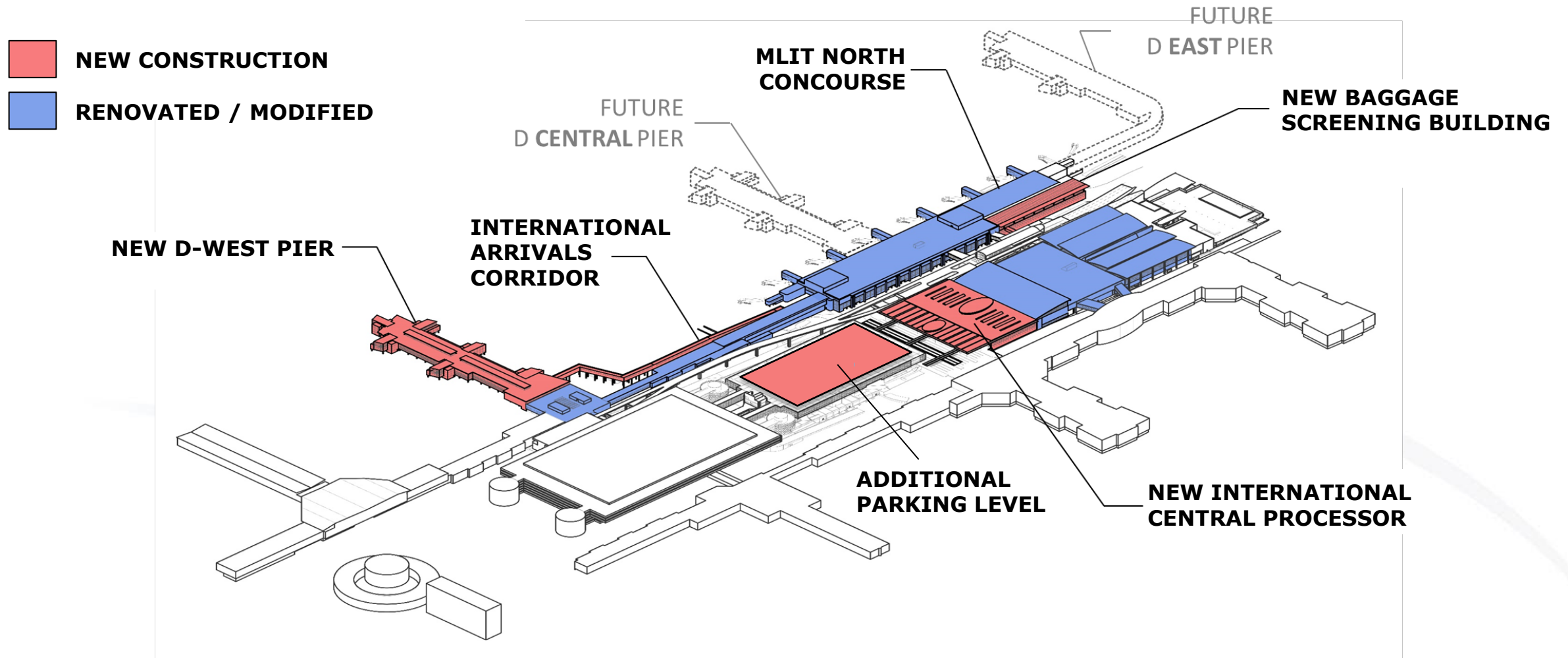
# IAH Terminal Redevelopment Program (ITRP) - Scope Overview

Program Budget - \$1.3B  
Program Substantial Completion - 2024





# International Terminal Complex – Future Build Out



# International Terminal Complex – Construction Substantial Completion Dates

 **NEW CONSTRUCTION**  
 **RENOVATED / MODIFIED**

## MLIT NORTH CONCOURSE RELIFE REFRESH

Baseline – Oct '23  
Current – Oct '23

## NEW BAGGAGE SCREENING BUILDING

Baseline – Oct '23  
Current – Sep '23

## NEW D-WEST PIER

Baseline – Oct '23  
Current – Q2 '23

## FIS MODIFICATIONS

Baseline – Mar '25  
Current – Jul '24

## NEW INTERNATIONAL CENTRAL PROCESSOR

Baseline – Mar '25  
Current – Q3 '24

## C GARAGE ADDITIONAL LEVELS 7 & 8

Baseline – Nov '23  
Current – Nov '23



# **International Terminal Complex**

## **North Terminal & Concourse Construction Photos**

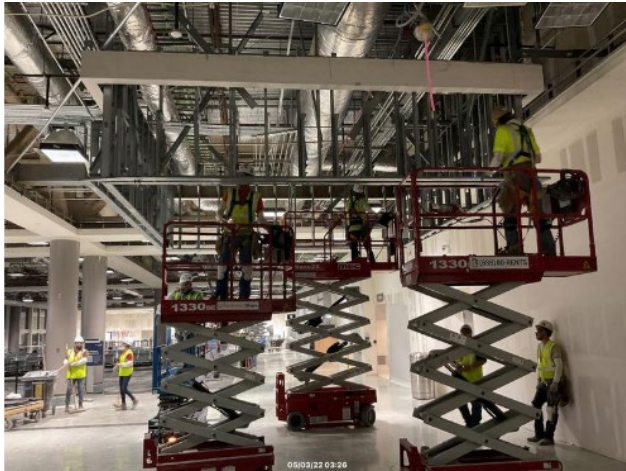
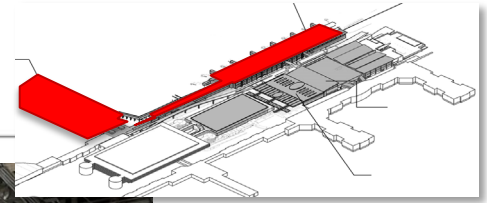


## International Terminal Design – D West Pier



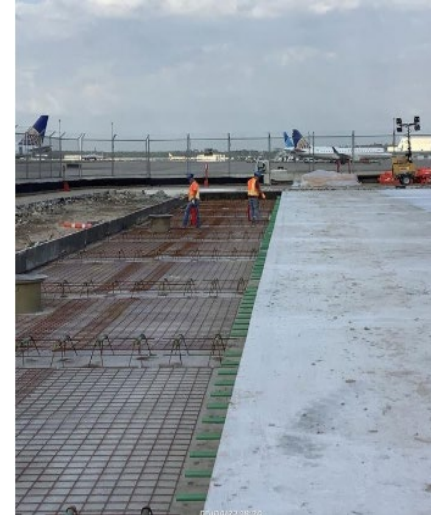
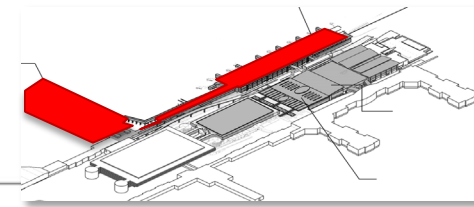


# Terminal D Project – Construction Photos



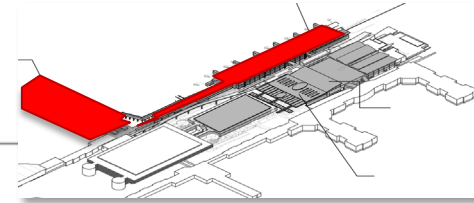
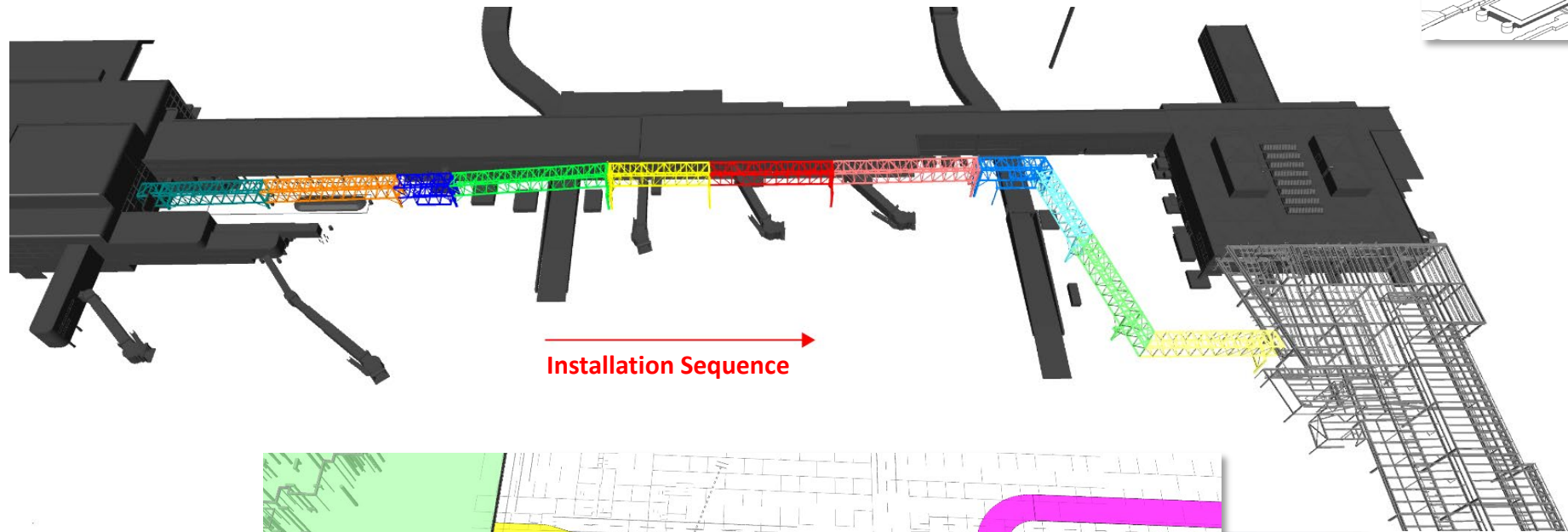


# Terminal D Project – Construction Photos





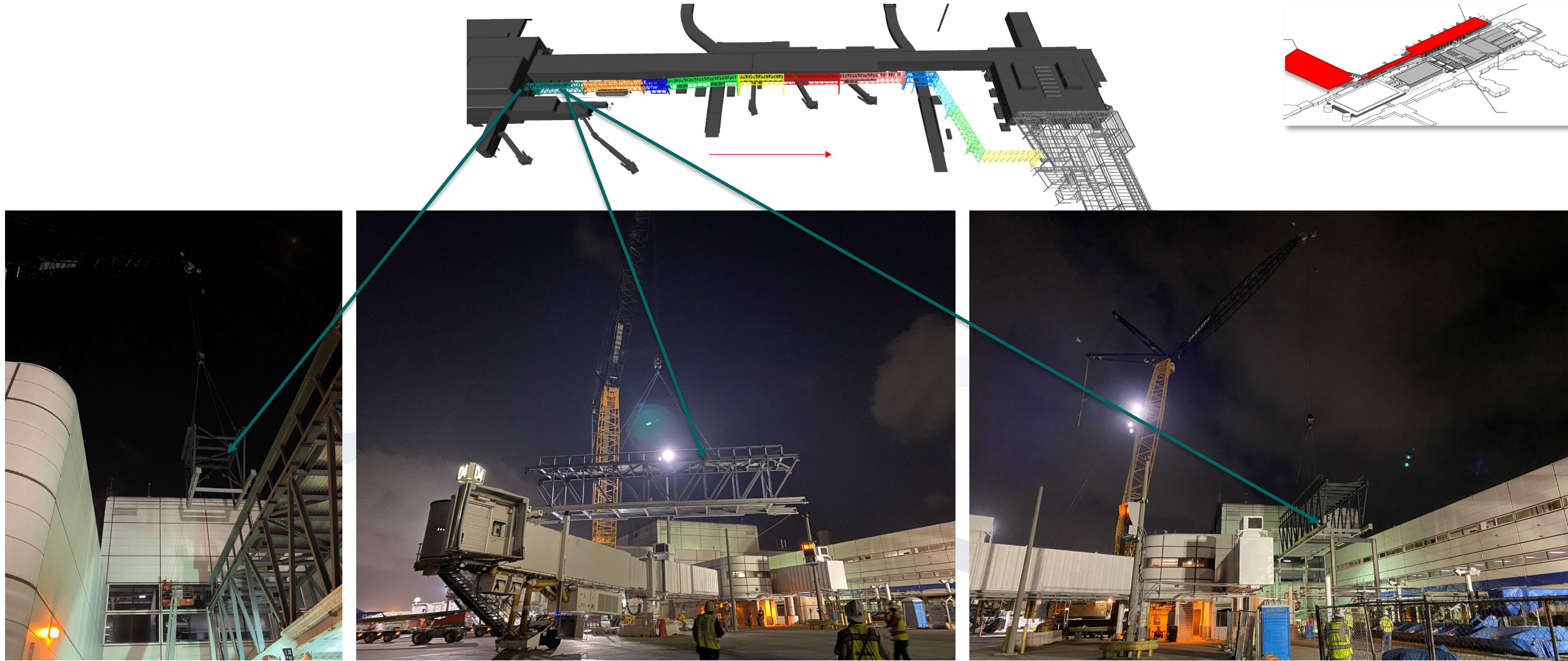
# Terminal D Project – Sterile Corridor Modular Installation



Steel Section

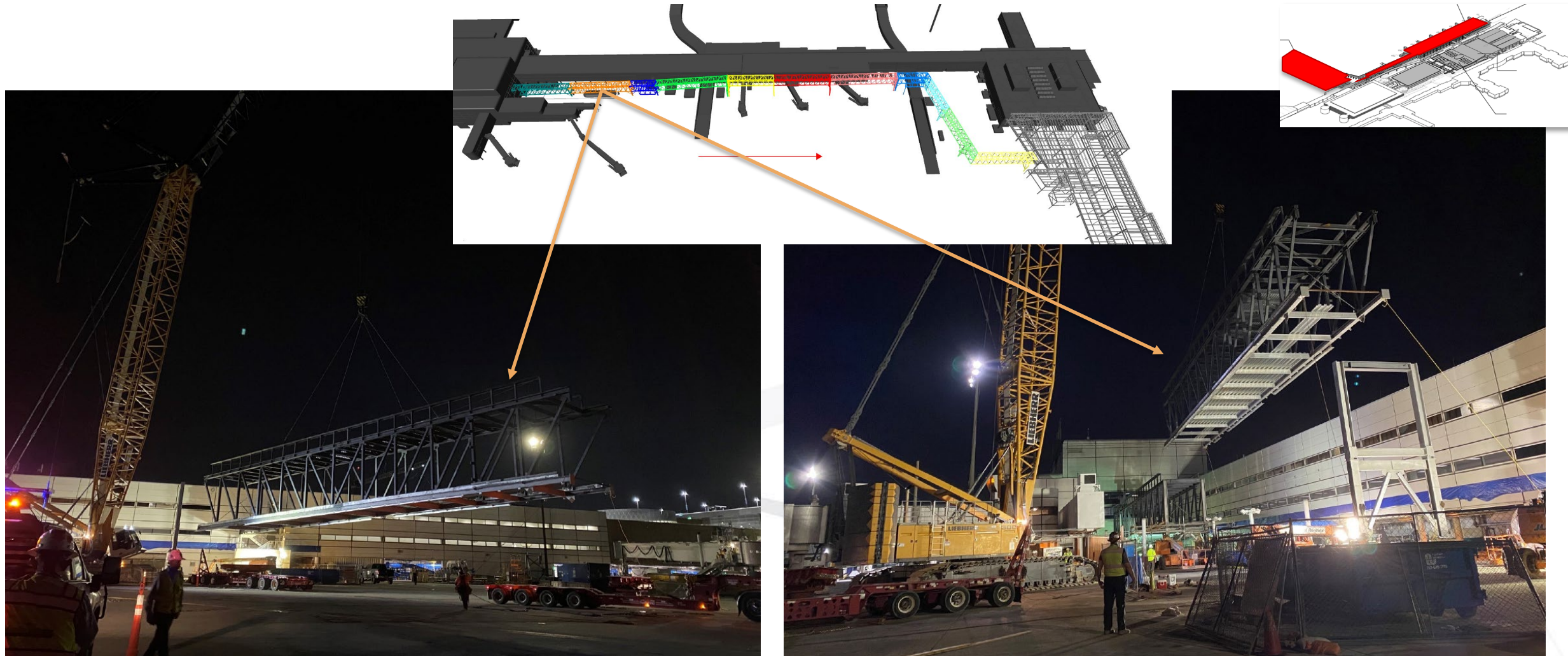
Crane

## Terminal D Project – Construction Photos



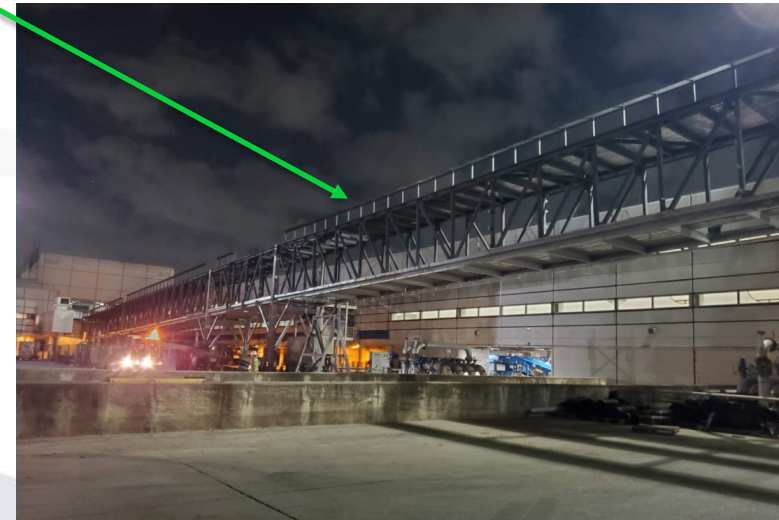
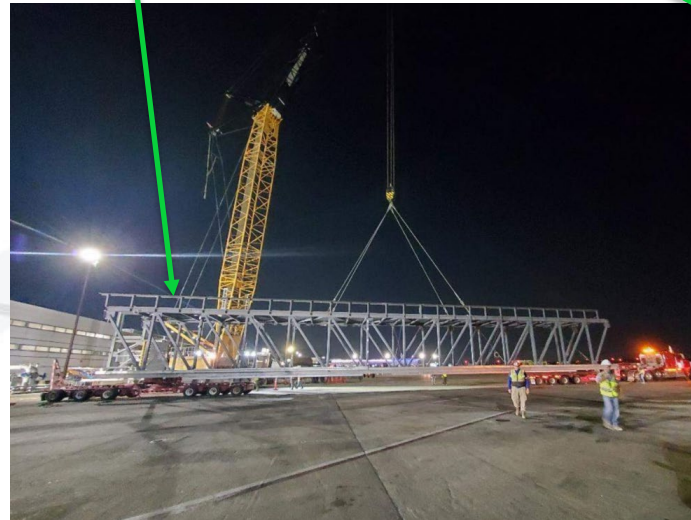
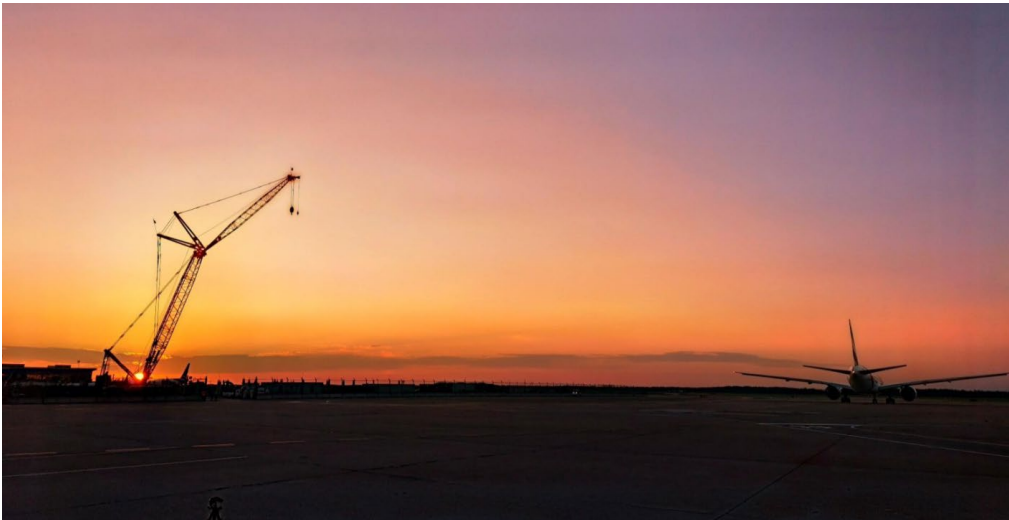
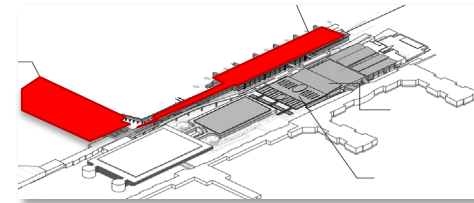
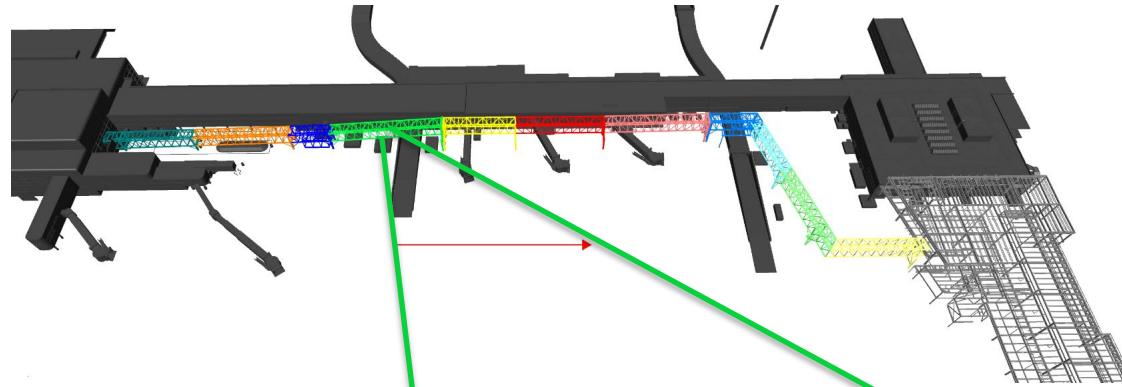


## Terminal D Project – Construction Photos

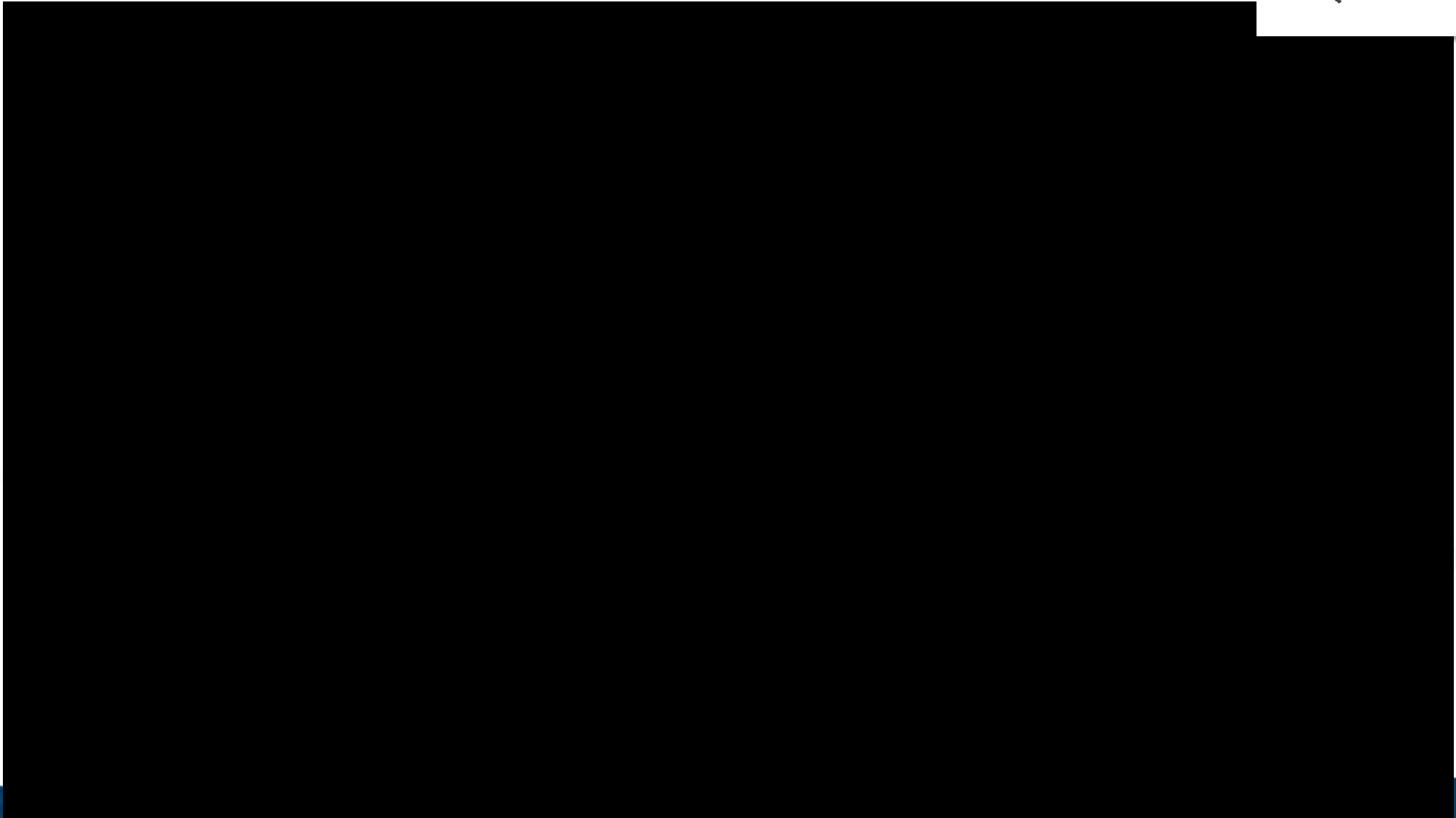




## Terminal D Project – Construction Photos



## Terminal D Project – Construction Photos (Video)





# International Terminal Complex

## Central Processor Construction Photos

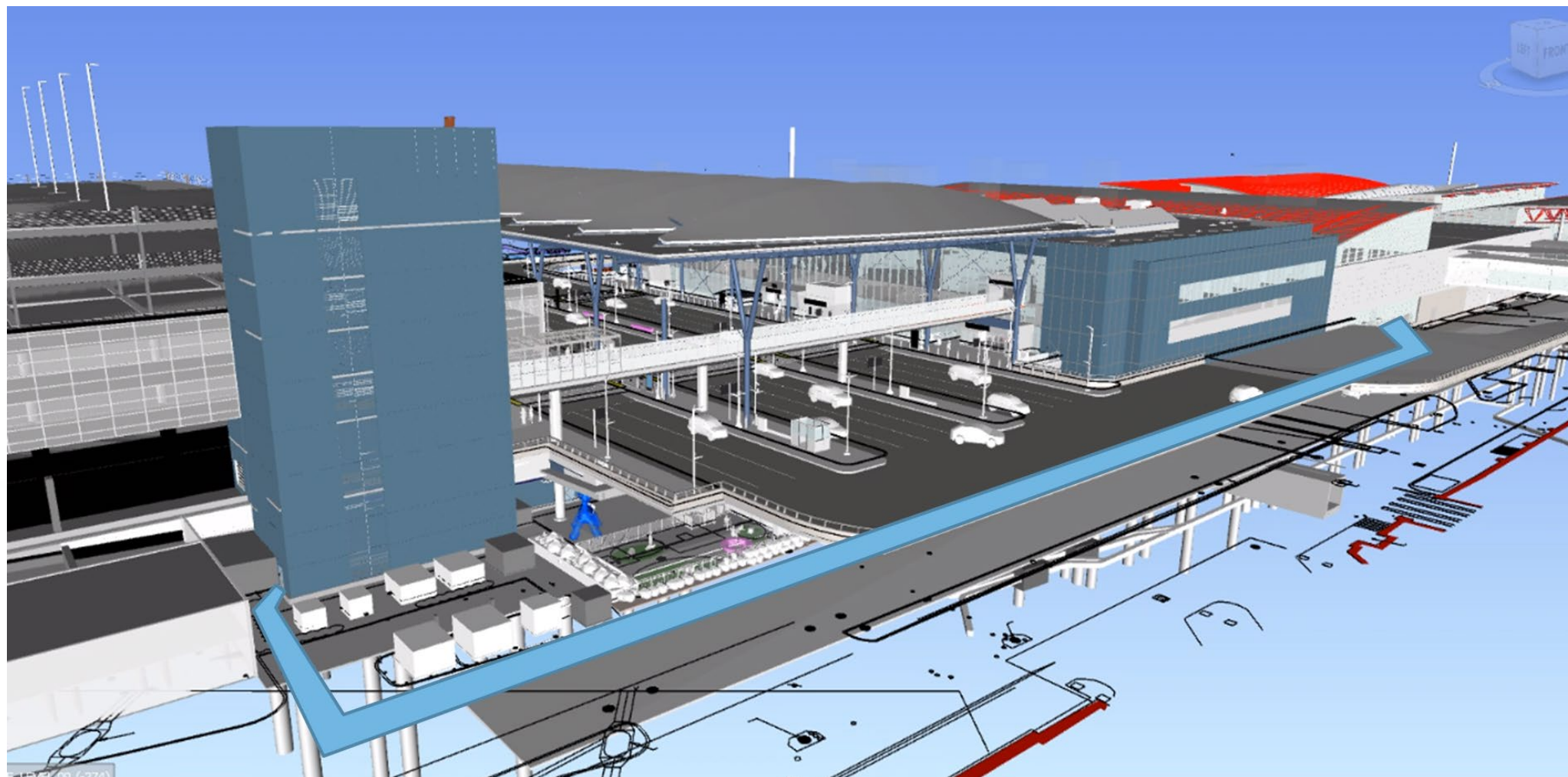


# International Terminal Design - Central Processor

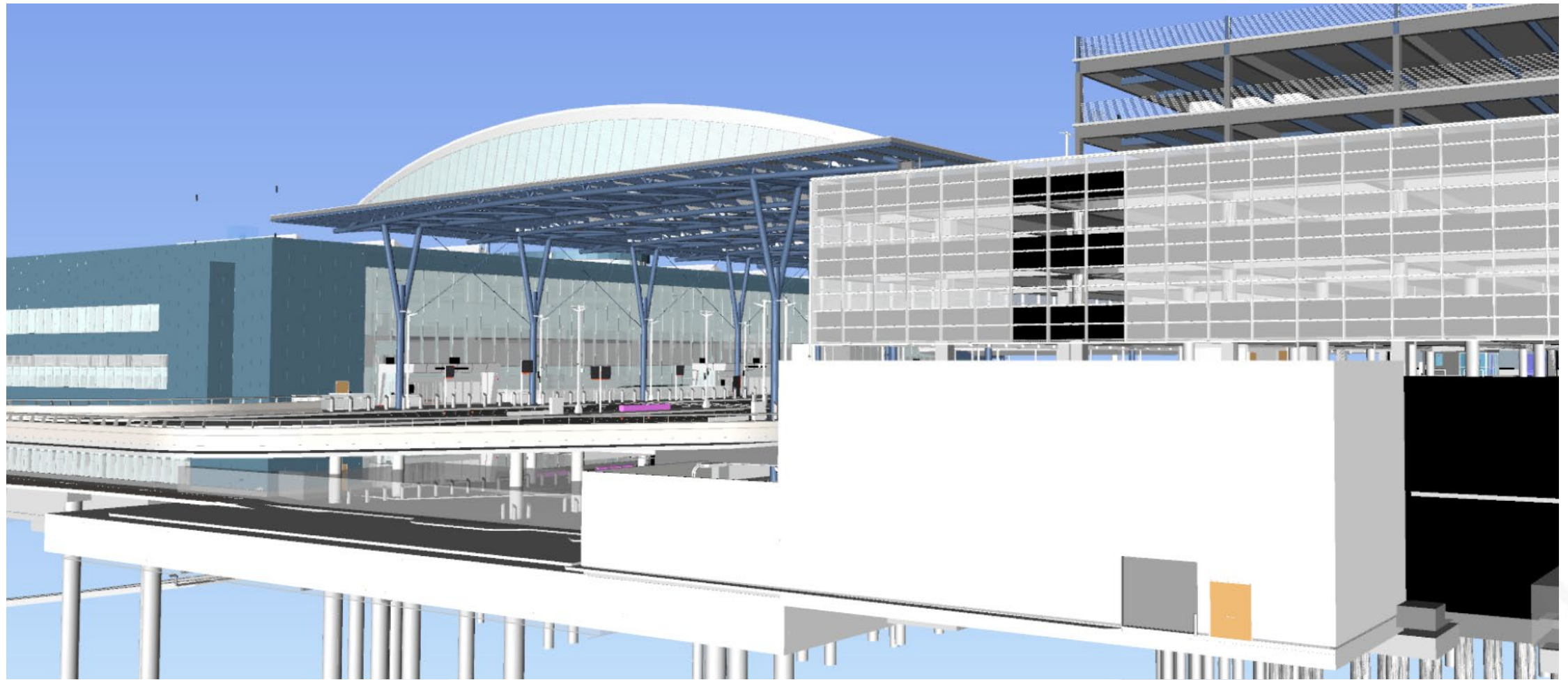




## International Terminal Processor – Building Model (South Side)



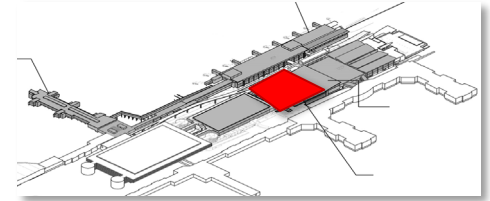
## International Terminal Processor – Building Model (North Side)



North Terminal Road – BHS Tunnel and Enclosure

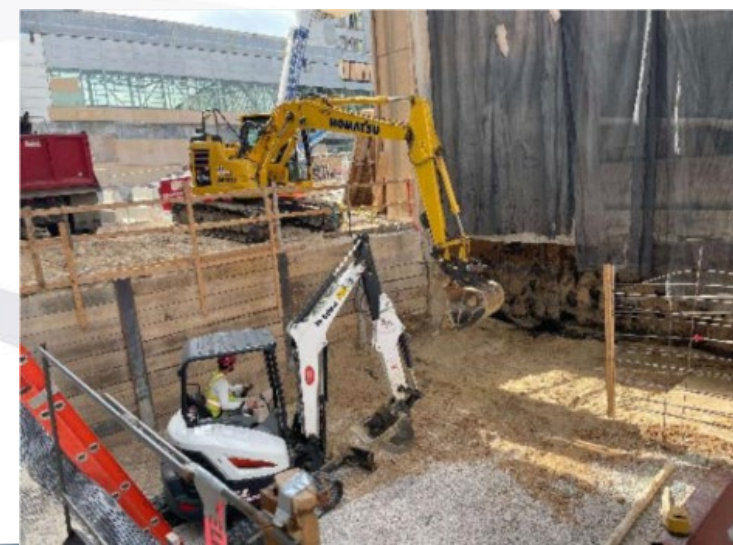
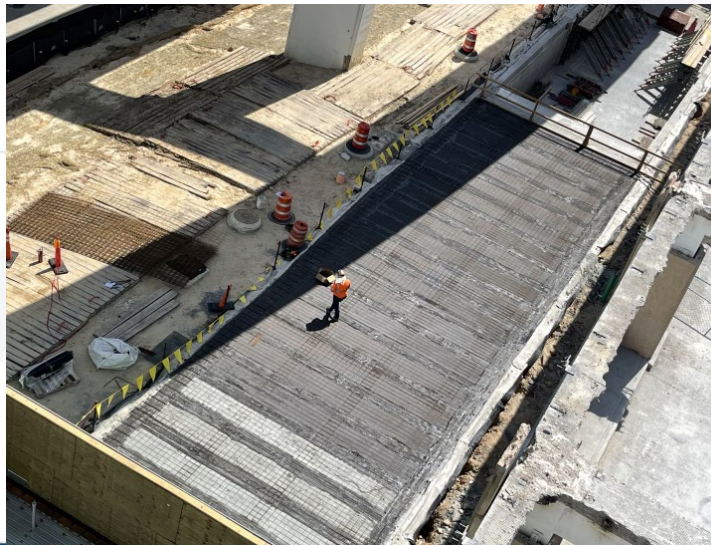
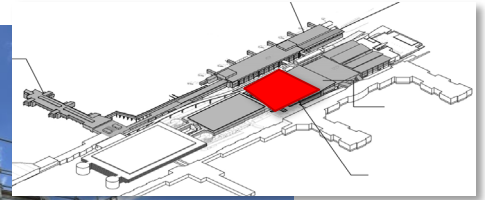


# International Terminal Processor – D/E Parking Garage Demolition



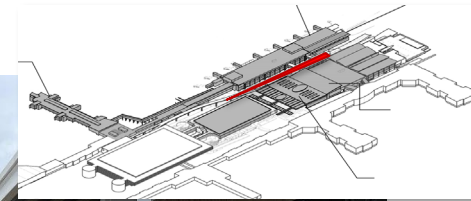
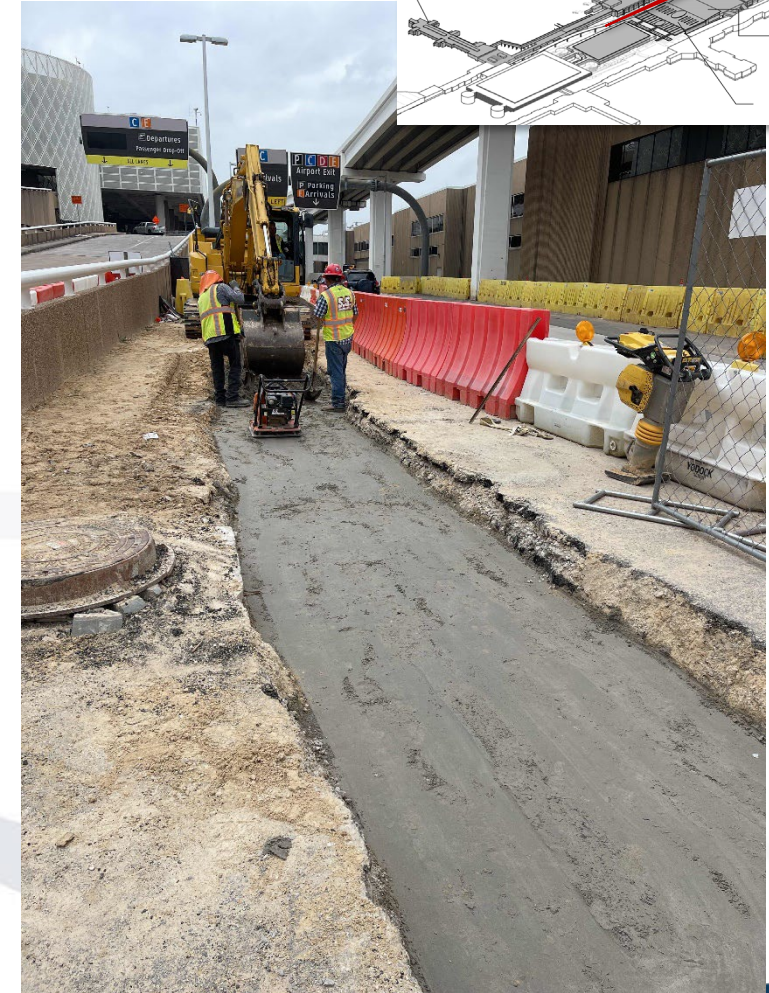
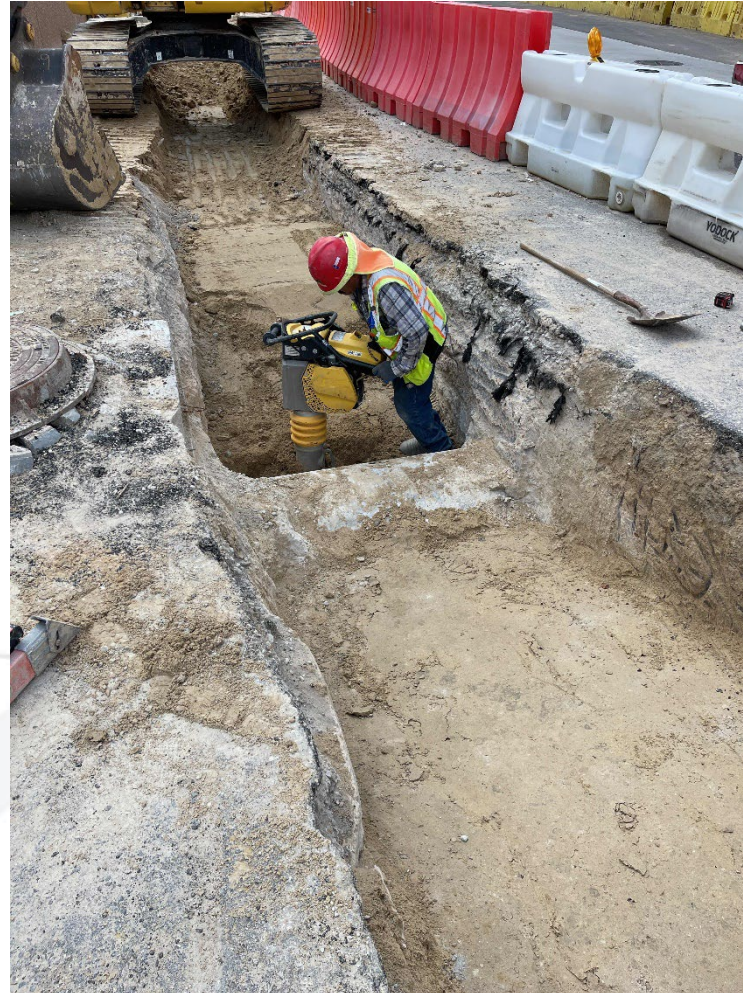


# International Terminal Processor – D/E Parking Garage Demolition





# International Terminal Processor - North Terminal Road Relocation & Tunnel Works















# International Terminal Processor – RIDF Ribbon Cutting



## Radio Intermediate Distribution Frame (RIDF) Relocation Fact Sheet

### IAH Terminal Redevelopment Program (ITRP)

-  The RIDF is a key component that supports over 25,000 radio subscribers.
-  RIDF supports the system providing >1,700 square miles of radio coverage for mission-critical first responders.
-  The top of the tower stands at 217 feet tall.
-  The RIDF supports FBI, City of Houston, the Houston Airport, Harris County, Humble Police Department, Department of Homeland Security and other critical first responders.
-  The new RIDF site, tower and shelter all have been designed for room for expansion. To support today's needs of all of the stakeholders but also to support tomorrow's technical needs as the stakeholders grow and technologies continue to advance.
-  Over 36,000 lbs. of batteries. (96 batteries @ 383lbs each= 36,768 lbs.)
-  Power: the RIDF is fed from two different CenterPoint substations; in case of loss, one substation the site will automatically switch the next substation.
-  If both CenterPoint sub stations are lost, then an onsite emergency generator, powered by natural gas will supply power.
-  In the event of a loss of both CenterPoint substations and the loss of natural gas, an onsite buried 1,000- gallon LP tank will provide fuel to the generator.
-  In the event of loss of both CenterPoint substations and the loss of the natural gas feed and the 1,000 gallons of LP, the system will switch over to battery power for 8 hours of run time.

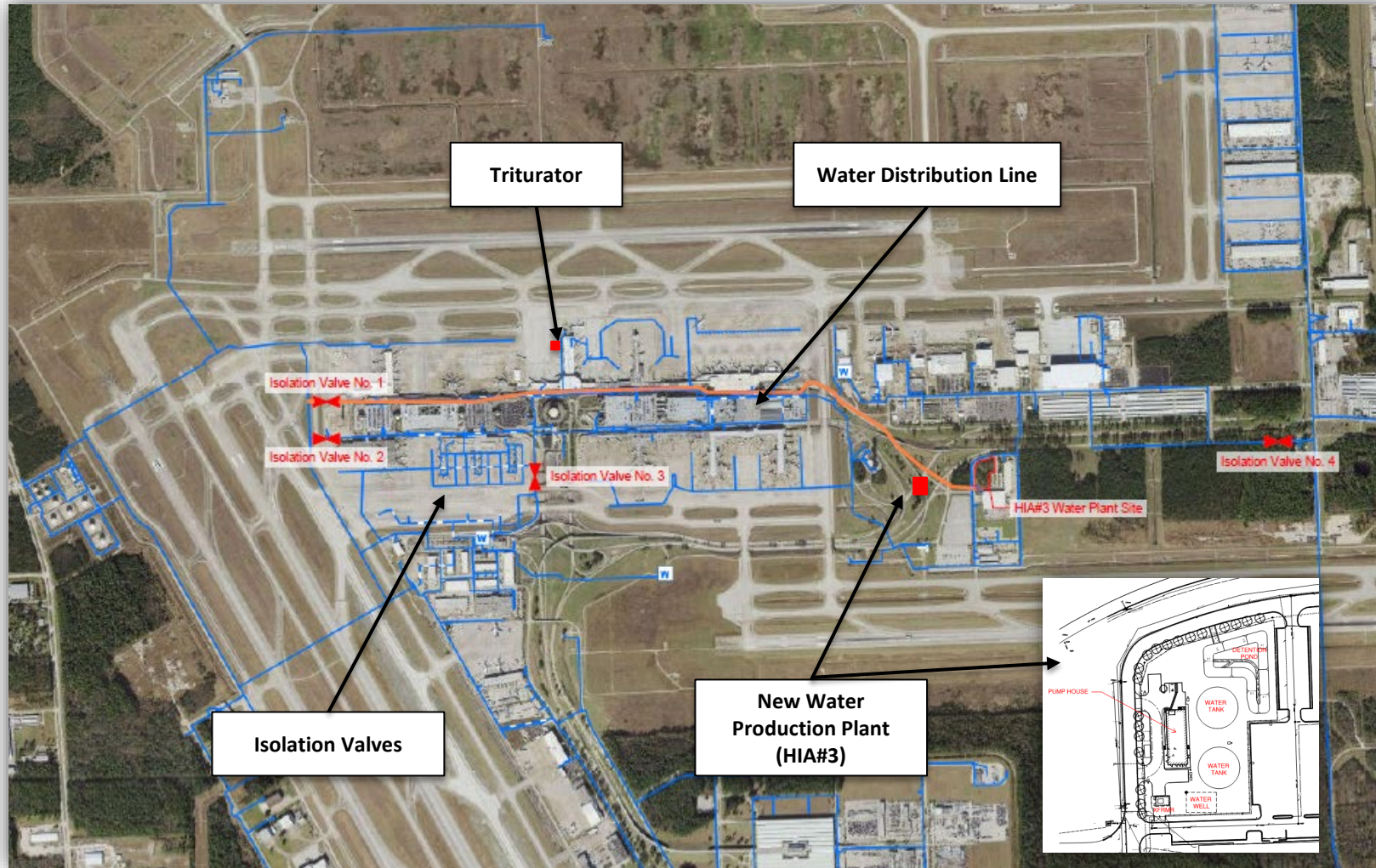






# Enabling Utilities Landside (EUL) Project

# Enabling Utilities Landside (EUL) Project



## Project Summary

- Construct a new **Water Production Plant (HIA#3)**:
  - **Pumping station**.
  - Two 1.2-million-gallon aboveground potable water **storage tanks**.
  - A new **water well** with supporting infrastructure.
- **New water distribution line to CTA**:
  - Water Line scope includes installing over a mile of underground water main with a combination of open cut/horizontal drilling/jack and bore.
  - Replacement of some of the aged water distribution line.
- Installation of **isolation valves** to maintain the water pressure in the CTA when water service area drops below 35psi.
- **Triturator** scope is an above-ground covered structure with truck bays and a recessed grinder pit.
- The construction completion is forecast for Q2 2023.



# Enabling Utilities Landside (EUL) Project - Construction

HIA Site Cleared



Well Drilling Commenced







# ITRP Upcoming Council Actions

# ITRP Upcoming Council Actions

Date	#	Contract	\$m
Jun/Jul 2022	1	FIS/International Central Processor CMAR (Hensel Phelps) – GMP Funding Request	\$234M
	2	FIS/International Central Processor AE (HOK) – Design Funding Request	\$ 1.7M
	3	MLIT CMAR (Austin Gilbane JV) – GMP Funding Request (C-Concessions Shell Buildout and CBIS/Decor Descope)	(\$24.2M)
	4	MLIT AE (Fentress) – Design Funding Request GMP	\$1.5M
	5	Program Management Support Services (PMSS) Team – Annual Funding	\$15.6M
Q3 2022	6	United Airlines NCN Reimbursable Agreement - De-Appropriation of Contract	(\$ 13M)
	7	PMO(IDO) Building DB – Pepper Lawson Waterworks Accept Works & Contract Close	\$ 0M
Q3 2023	8	Program Management Support Services (PMSS) Team – Annual Funding	~\$12M
Q1 2024	9	Airline Move Fees – Funding Request	~\$2M



# Thank You





# Reference

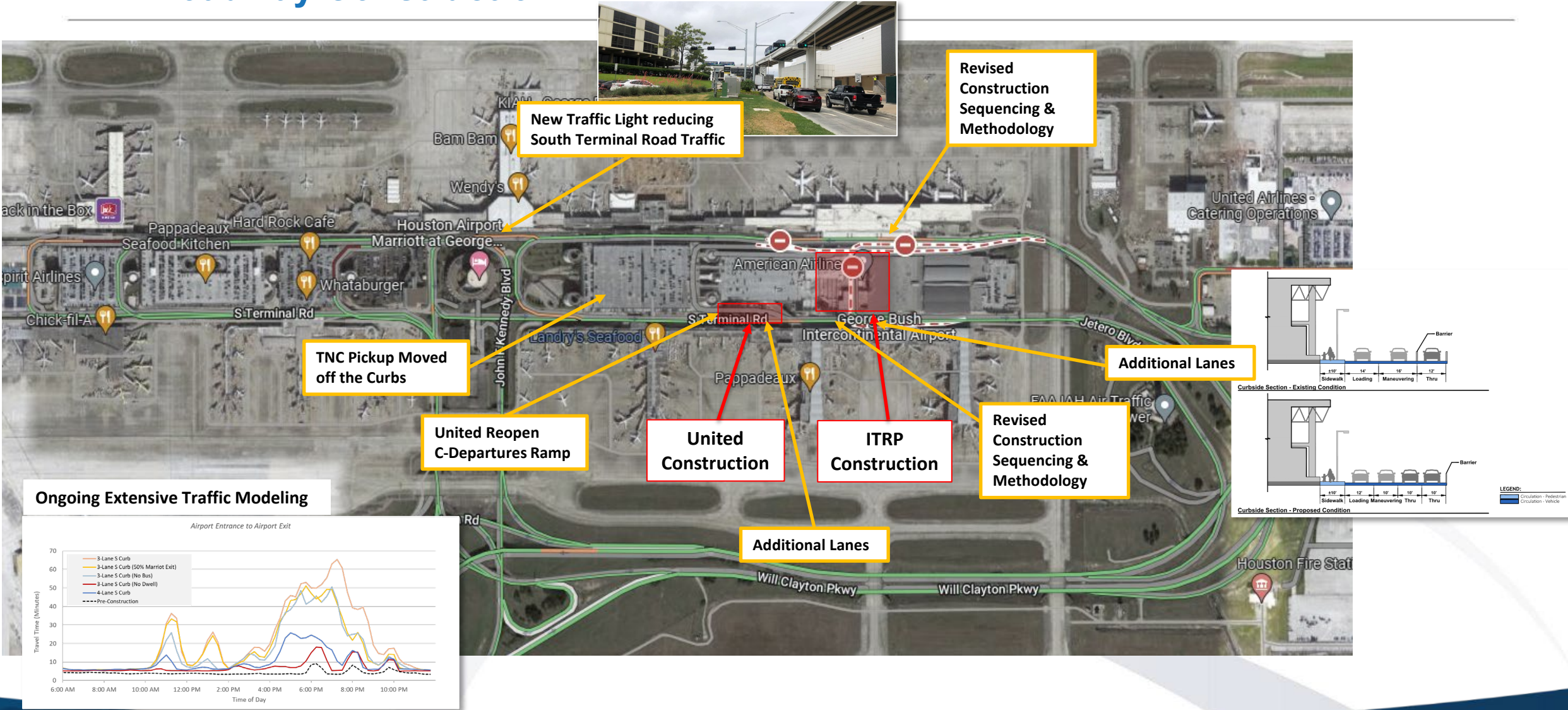
# IAH Traffic Update

---

- Traffic is currently being impacted by construction activities for projects of the City and United Airlines.
- These projects are critical to support the growing demand and capacity needs, improving aged facilities, installing state of the art technology and support achieving the Houston Airport System vision of becoming a 5-Star Airport.
- A substantial amount of effort and mitigations have gone into managing the traffic demands between all the stakeholders, airline partners and our project teams; with further improvements and modifications planned:
  - Marriott traffic light – Complete
  - Additional Curb capacity made available for the South International Arrivals – Early June 2022
  - Additional Roadway capacity made available for the South International Arrivals – Early June 2022
  - Enhanced roadway under the United Airlines Early Bag Storage Project – July 2022
  - Reduction in roadway congestion by relocation the TNC pickup and improving the passenger experience – July 2022
  - Original lane capacity restored under the United Airlines Early Bag Storage Project – October 2022
  - D-West Pier - Opening 2023
  - International Terminal Central Processor new roadway and curbs - Opening 2024



# IAH Roadway Construction





# IAH Roadway Construction Areas

