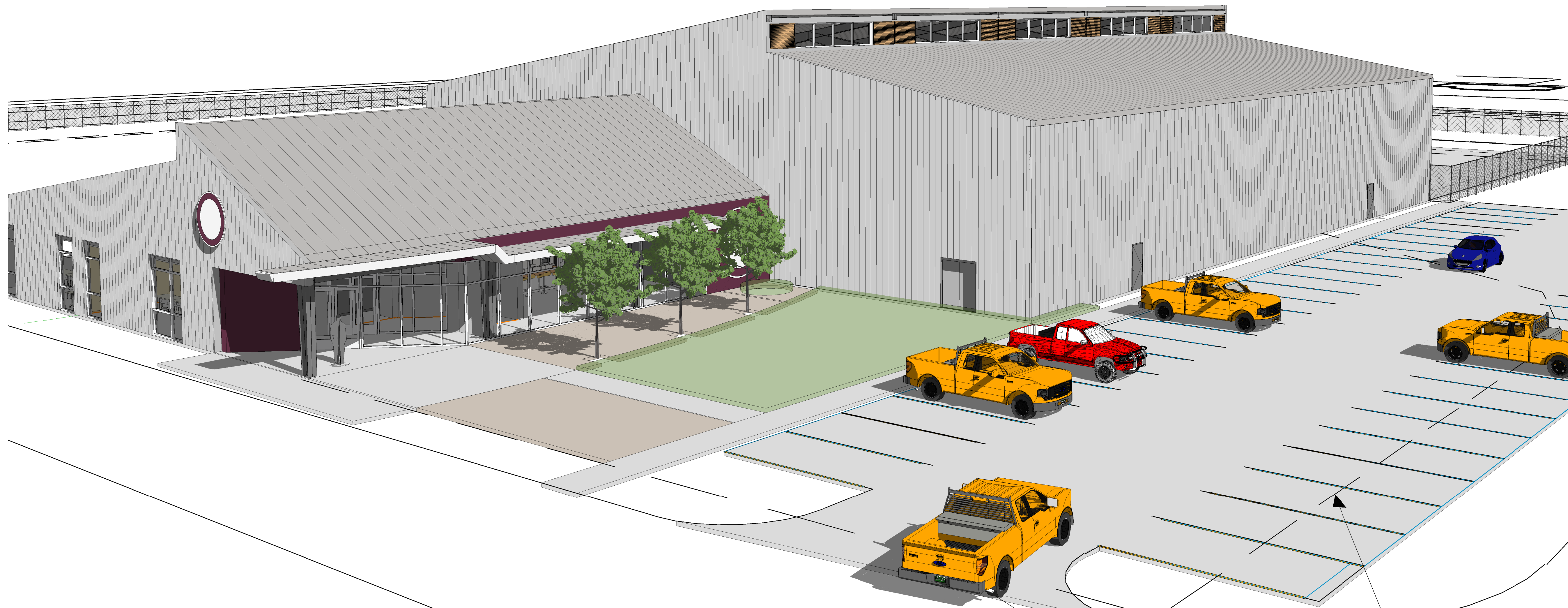




# TEXAS SOUTHERN UNIVERSITY FLIGHT ACADEMY @ ELLINGTON

BRIDGING DOCUMENT\_03 AUGUST 2023

Sheet Index	
Sheet Number	Sheet Name
General	
.	.
G100	COVER
G101	PRESENTATION VIEW_ENTRY
G102	PRESENTATION VIEW_FROM SOUTH
G103	PRESENTATION VIEW_FROM WEST
Civil	
C101	SITE PLAN
C102	SITE PLAN_3D
Architectural	
A100	ARCHITECTURAL OVERALL PLAN
A101	ARCHITECTURAL FLOOR PLAN_ACADEMY
A101_A	ARCHITECTURAL FLOOR PLAN_ACADEMY INITIAL
A102	ARCHITECTURAL FLOOR PLAN_HANGAR
A103	ARCHITECTURAL ROOF PLAN
A201	ARCHITECTURAL BUILDING ELEVATIONS
A202	ARCHITECTURAL BUILDING ELEVATIONS
A301	ARCHITECTURAL BUILDING SECTIONS
A302	ARCHITECTURAL BUILDING SECTIONS
A401	ARCHITECTURAL ENLARGED VIEWS

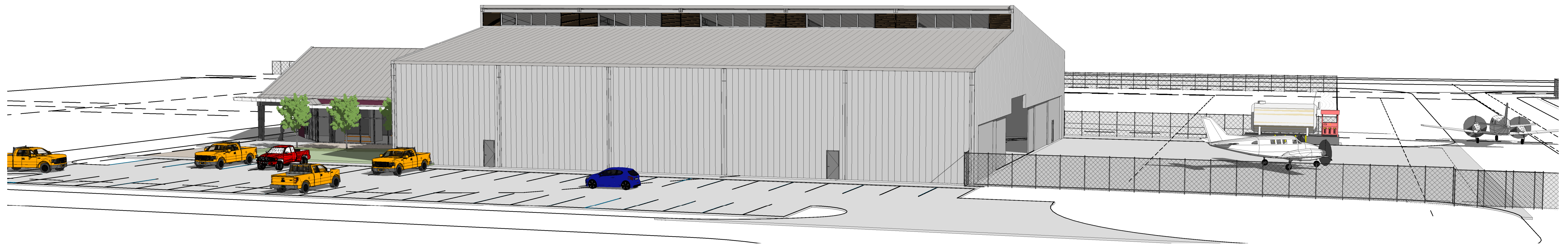




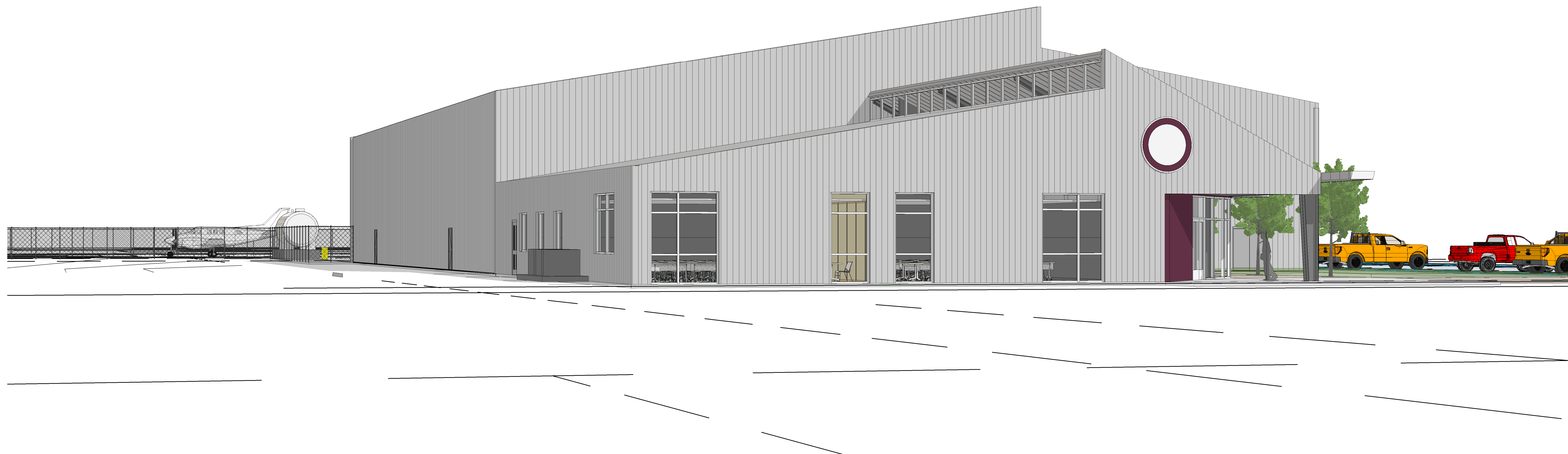


① PERSPECTIVE VIEW @ ENTRY LARGE





① VIEW FROM SOUTH



① VIEW FROM WEST



REVISIONS

No.	DESCRIPTION	DATE	BY

DESIGNER: RP / SK

DRAWN BY: SK

CHECKED BY: RP

ISSUE DATE: 7/14/2023

APPROVED BY: GH

APPROVAL DATE:

DIRECTOR  
of  
HOUSTON AIRPORT SYSTEM

Review/ Approval Category	
Approved For Construction	

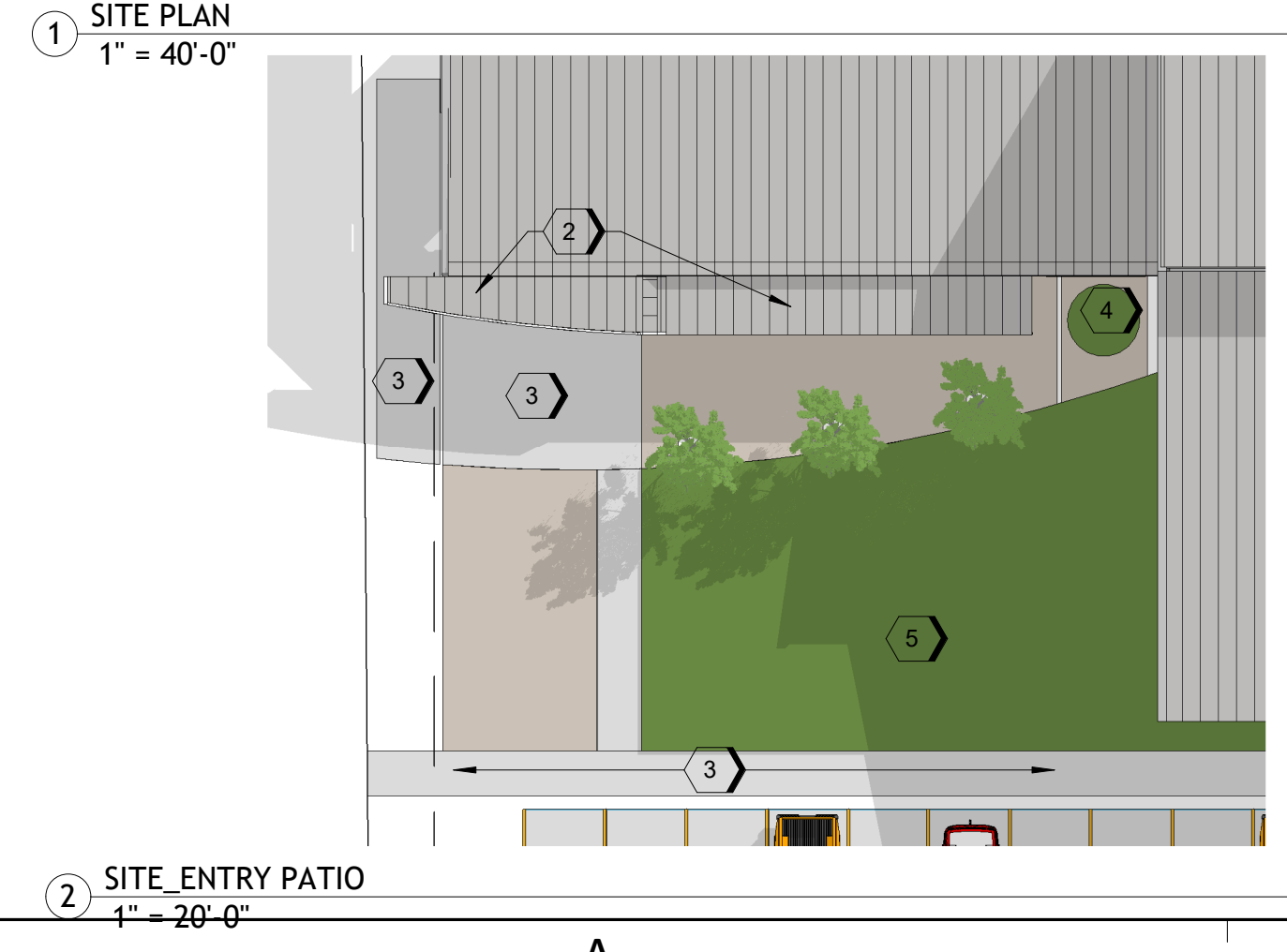
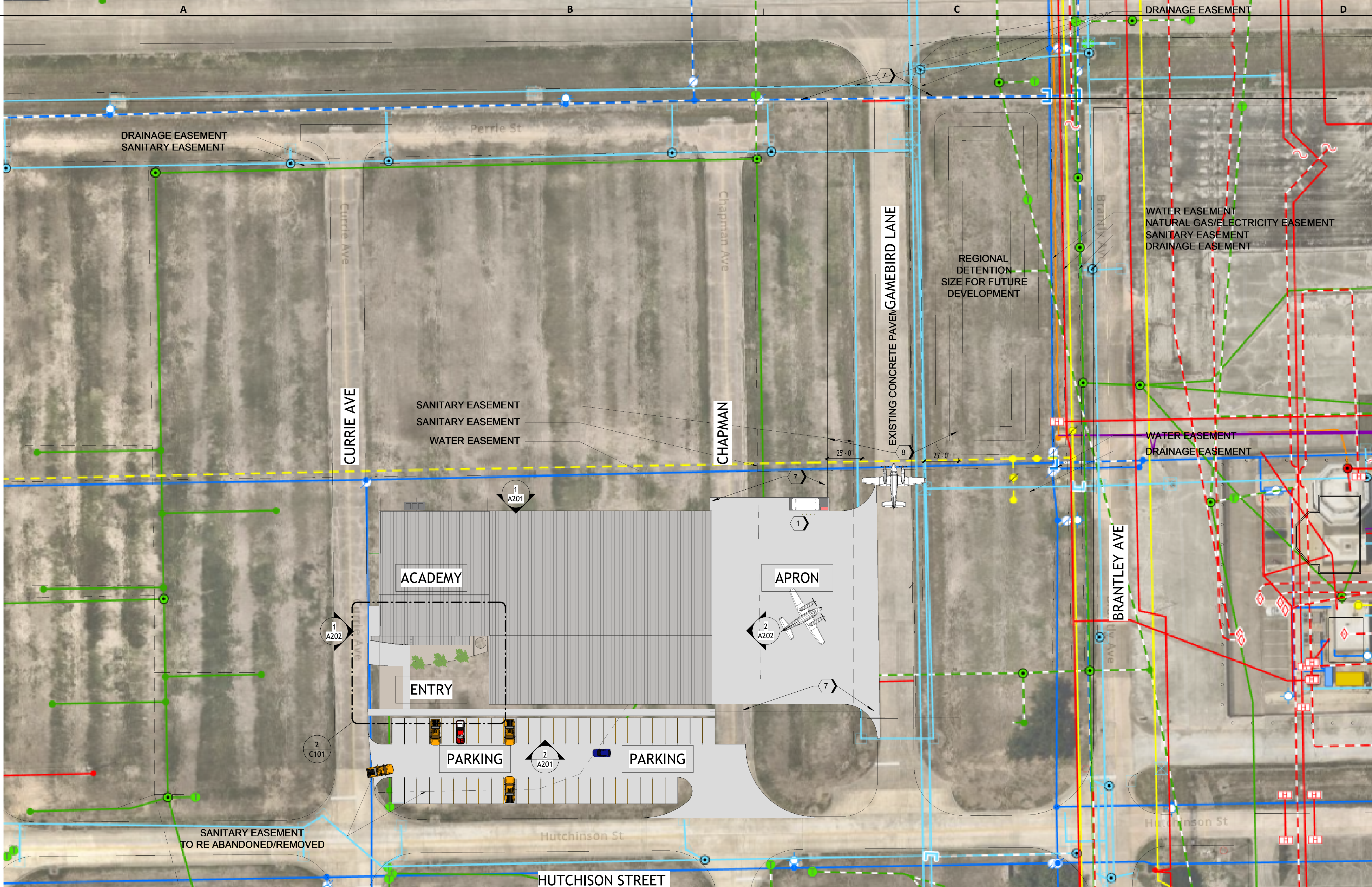
SHEET NAME: SITE PLAN

SHEET No. C101 SCALE: As indicated

SHEET SIZE: 22"x34" ANSI-D

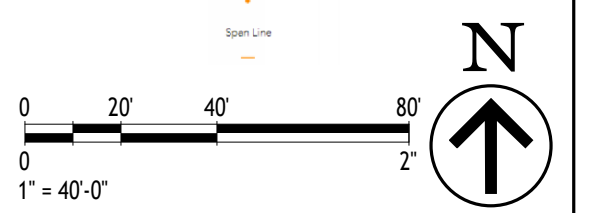
UTILITY LEGEND

- EDU UTILITIES**
  - ELECTRIC
    - BUILDING ACCESS POINT
    - WATER
    - SEWER
    - TELEPHONE
    - OTHER
    - POINT OF CONTRADICTION
    - SEWER
    - WATER
    - TELEPHONE
  - Electric Meter
    - BUILDING ACCESS POINT
    - WATER
    - SEWER
    - TELEPHONE
    - OTHER
    - POINT OF CONTRADICTION
    - SEWER
    - WATER
    - TELEPHONE
  - Electric Line
    - ACTIVE
    - ABANDONED
  - Electric Area
    -
- SEWERAGE**
  - Sanitary Point
    - BUILDING ACCESS POINT
    - WATER
    - SEWER
    - TELEPHONE
    - OTHER
    - POINT OF CONTRADICTION
    - SEWER
    - WATER
    - TELEPHONE
  - Sanitary Line
    - ACTIVE
    - ABANDONED
  - Sanitary Area
    -
- WATER**
  - Water Point
    - BUILDING ACCESS POINT
    - WATER
    - SEWER
    - TELEPHONE
    - OTHER
    - POINT OF CONTRADICTION
    - SEWER
    - WATER
    - TELEPHONE
  - Water Line
    - ACTIVE
    - ABANDONED
  - Water Area
    -



KEY NOTES SITE PLAN

- 1 FUEL STATION
- 2 ENTRY CANOPY
- 3 CONCRETE PAVING
- 4 PLANTER
- 5 LANDSCAPING
- 6 NOT USED
- 7 AIRFIELD FENCING
- 8 AIRFIELD FENCING NOTE: FENCING ALONG AIRCRAFT ROUTE TO AIRFIELD MUST BE OFFSET FROM PLANE WING BY 25 FT MINIMUM. CONSIDER LARGEST AIRCRAFT TO BE ACCOMMODATED.



FILE PATH: C:\Users\cavskel\OneDrive - City of Houston\Desktop\DESIGN MGR\EFD\_TSU Hangan\230731\_TSU\_detached.rvt

PLOT DATE: DOA DWG FILE: OLD DOA No.:





ELLINGTON AIRPORT

**TSU FLIGHT ACADEMY**

C.I.P. No. PN1030

A.I.P. No.

C.O.H. No.

D.O.A No.

DESIGNER PROJECT No.:

PROJECT STATUS:

**BRIDGING DOCUMENTS**

**REVISIONS**

No.	DESCRIPTION	DATE	BY

DESIGNER: RP / SK  
 DRAWN BY: SK  
 CHECKED BY: RP  
 ISSUE DATE: 08/03/23  
 APPROVED BY: GH  
 APPROVAL DATE:

DIRECTOR  
 of  
 HOUSTON AIRPORT SYSTEM

Review/ Approval Category	
Approved For Construction	



SHEET NAME: SITE PLAN\_3D

SHEET No. C102 SCALE:

SHEET SIZE: 22"x34" ANSI-D



FILE PATH: C:\Users\cavskel\OneDrive - City of Houston\Desktop\Design MGR\EFD\_TSU Hangar\230731\_TSU\_detached.rvt  
 HAS FILE:  
 PLOT DATE:  
 DOA DWG FILE:  
 OLD DOA No. :

① 3D OVERALL



DESIGNER PROJECT No.:

PROJECT STATUS:

**BRIDGING DOCUMENTS**

**REVISIONS**

No.	DESCRIPTION	DATE	BY

DESIGNER: RP / SK

DRAWN BY: SK

CHECKED BY: RP

ISSUE DATE: 08/03/23

APPROVED BY: GH

APPROVAL DATE:

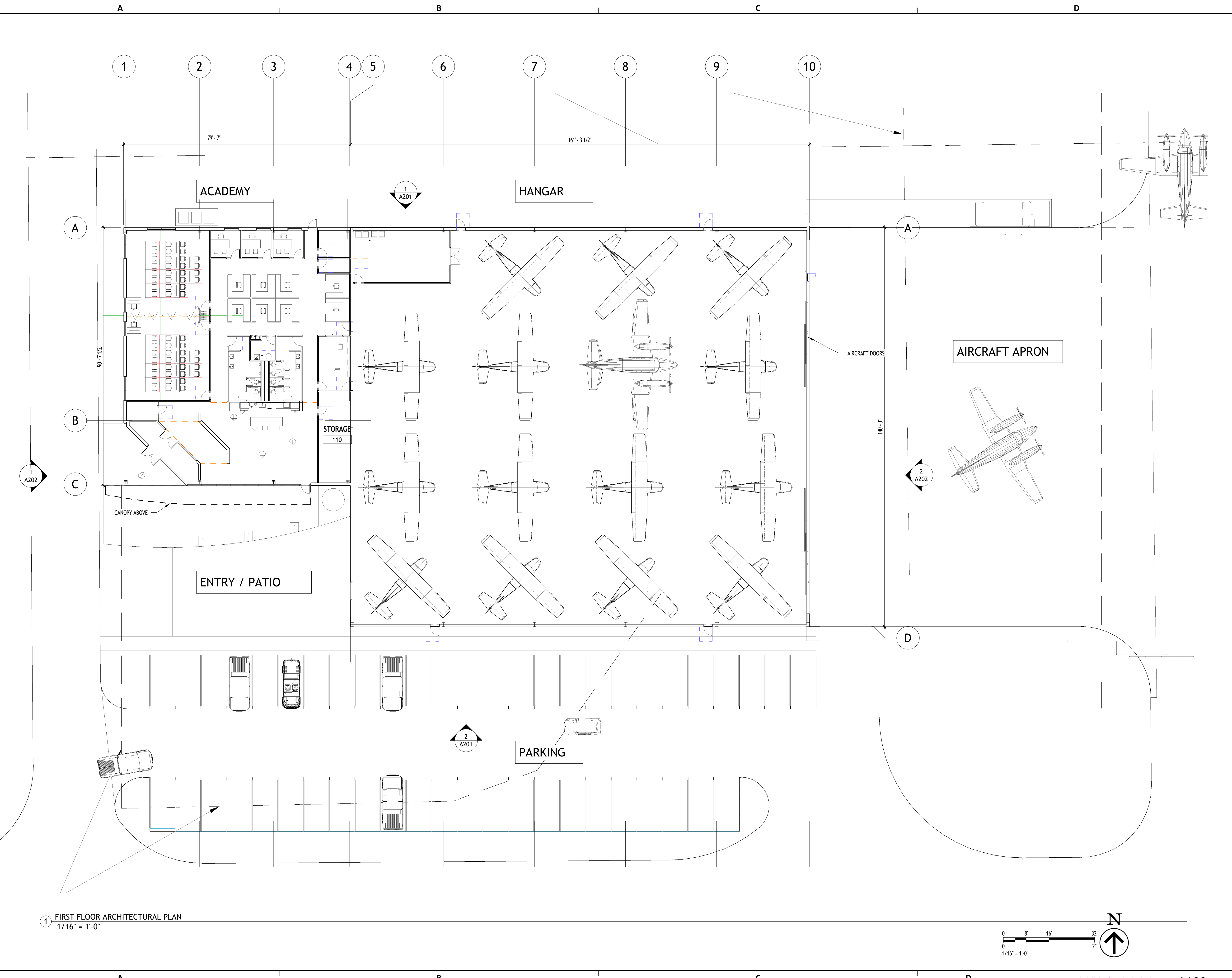
DIRECTOR  
 of  
 HOUSTON AIRPORT SYSTEM

Review/ Approval Category	
Approved For Construction	

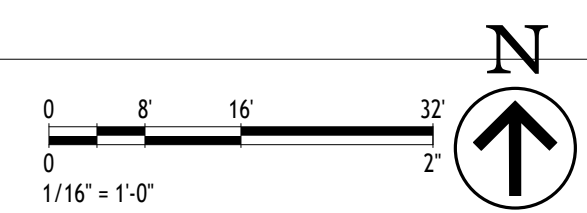
SHEET NAME: ARCHITECTURAL OVERALL PLAN

SHEET No. A100 SCALE: 1/16" = 1'-0"

SHEET SIZE: 22"x34" ANSI-D



1 FIRST FLOOR ARCHITECTURAL PLAN  
 1/16" = 1'-0"



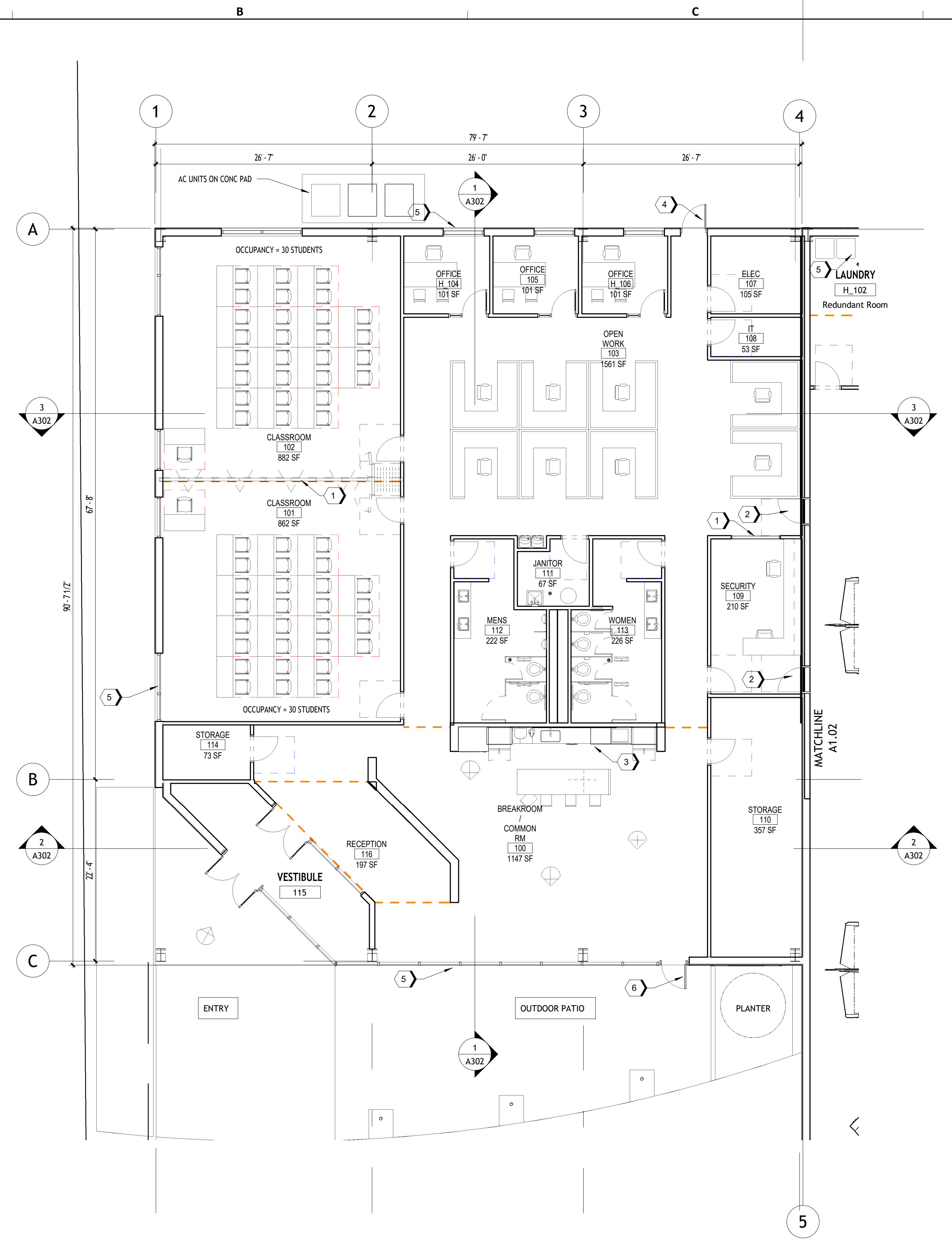
FILE PATH: C:\Users\cavskei\OneDrive - City of Houston\Desktop\DESIGN MGR\FEED\_TSU Hangar\230731\_TSU\_detached.rvt  
 HAS FILE:  
 PLOT DATE:  
 DOA DWG FILE:  
 OLD DOA No.:





ELLINGTON AIRPORT	
<b>TSU FLIGHT ACADEMY</b>	
C.I.P. No. <b>PN1030</b>	A.I.P. No.
C.O.H. No.	D.O.A No.

- KEY NOTES PLANS**
- 1 MOVABLE PARTITION
  - 2 SECURE ENTRY BETWEEN ACADEMY & HANGAR
  - 3 COFFEE BAR
  - 4 REQUIRED EXIT
  - 5 WINDOW / STOREFRONT
  - 6 EXIT / ENTRY TO OUTDOOR PATIO



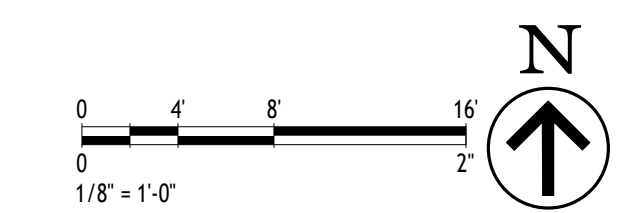
EXTERIOR WALLS:  
METAL ON GRIDS W/3-5/8" MTL STUDS @ 24"O.C., R-19 BATT INSUL. W/ 5/8" GYP BD PRIMED & PAINTED

INTERIOR WALLS:  
3-5/8" MTL STUDS @ 24"O.C., W/ 5/8" GYP BD TO BOTH SIDES TO UNDERSIDE OF ROOF DECK PRIMED & PAINTED

DEMISING WALL:  
8" MTL STUDS @ 24"O.C., R-19 BATT INSUL. TO UNDERSIDE OF ROOF DECK W/ 2-5/8" GYP BD ACADEMY SIDE PRIMED & PAINTED - 1-HR RATED

ROOF:  
METAL ROOF ON 4" RIGID INSUL (R-19) METEL DECK ON PURLINS

1 ACADEMY FLOOR PLAN  
1/8" = 1'-0"



DESIGNER PROJECT No.:  
PROJECT STATUS:  
**BRIDGING DOCUMENTS**

**REVISIONS**

No.	DESCRIPTION	DATE	BY

DESIGNER: RP / SK  
DRAWN BY: SK  
CHECKED BY: RP  
ISSUE DATE: 07/03/23  
APPROVED BY: GO  
APPROVAL DATE:

DIRECTOR  
of  
HOUSTON AIRPORT SYSTEM

Review/ Approval Category	
Approved For Construction	

SHEET NAME: ARCHITECTURAL FLOOR PLAN\_ACADEMY

SHEET No. A101 SCALE: 1/8" = 1'-0"

SHEET SIZE: 22"x34" ANSI-D

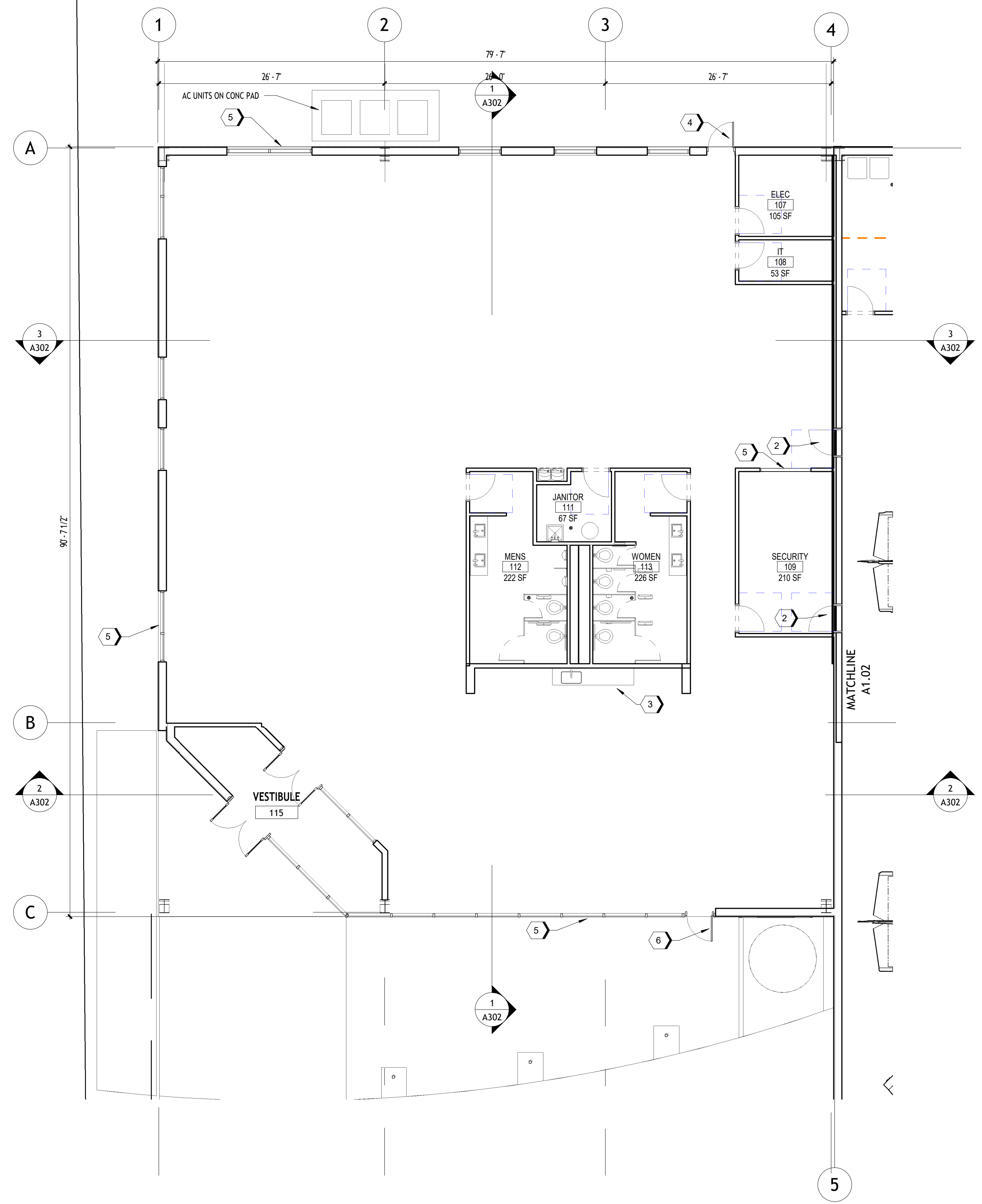
FILE PATH: C:\Users\cavskei\OneDrive - City of Houston\Desktop\Design MGR\FED\_TSU Hangar\230731\_TSU\_detached.rvt

PLOT DATE: DOA DWG FILE: OLD DOA No.:



**KEY NOTES PLANS**

- 1 N/A
- 2 SECURE ENTRY BETWEEN ACADEMY & HANGAR
- 3 COFFEE BAR
- 4 REQUIRED EXIT
- 5 WINDOW
- 6 EXIT / ENTRY TO OUTDOOR PATIO



DESIGNER PROJECT No.:

PROJECT STATUS:  
**BRIDGING DOCUMENTS**

**REVISIONS**

No.	DESCRIPTION	DATE	BY

DESIGNER: RP / SK  
 DRAWN BY: SK  
 CHECKED BY: RP  
 ISSUE DATE: 08/03/23  
 APPROVED BY: GO  
 APPROVAL DATE:

DIRECTOR  
 of  
 HOUSTON AIRPORT SYSTEM

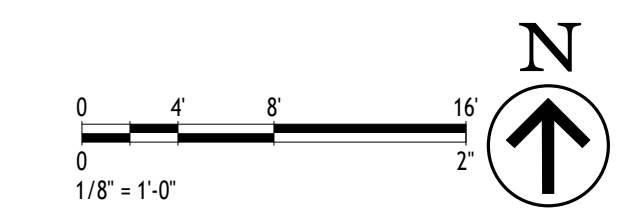
Review/ Approval Category	
Approved For Construction	

SHEET NAME: ARCHITECTURAL FLOOR PLAN\_ACADEMY INITIAL

SHEET No. A101\_A SCALE: 1/8" = 1'-0"

SHEET SIZE: 22"x34" ANSI-D

1 ACADEMY FLOOR PLAN  
 1/8" = 1'-0"



FILE PATH: C:\Users\cavskeri\OneDrive - City of Houston\Desktop\Design MGR\EFD\_TSU Hangar\230731\_TSU\_detached.rvt

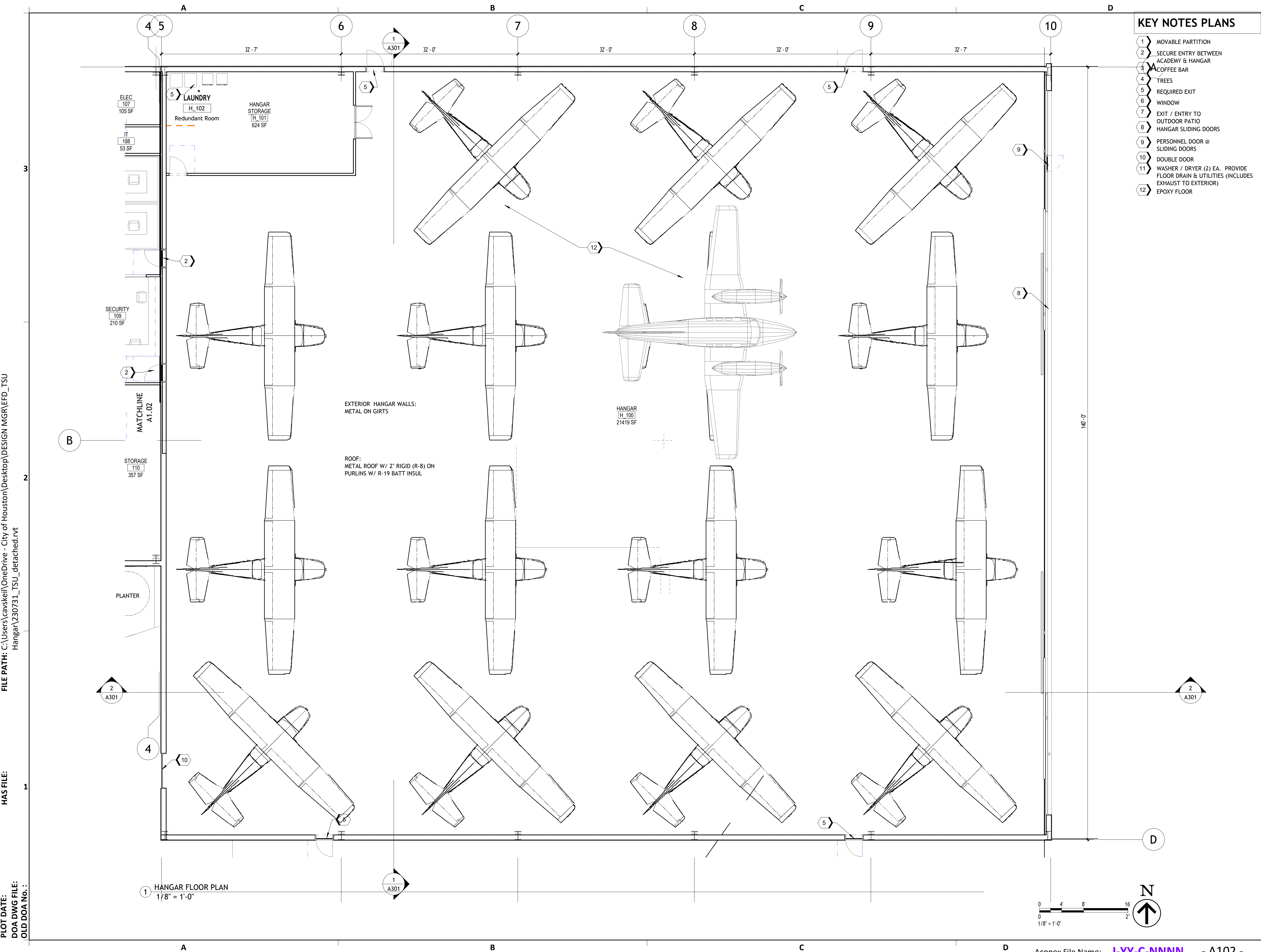
HAS FILE:

PLOT DATE:  
 DOA DWG FILE:  
 OLD DOA No.:



**KEY NOTES PLANS**

- 1 MOVABLE PARTITION
- 2 SECURE ENTRY BETWEEN ACADEMY & HANGAR
- 3 COFFEE BAR
- 4 TREES
- 5 REQUIRED EXIT
- 6 WINDOW
- 7 EXIT / ENTRY TO OUTDOOR PATIO
- 8 HANGAR SLIDING DOORS
- 9 PERSONNEL DOOR @ SLIDING DOORS
- 10 DOUBLE DOOR
- 11 WASHER / DRYER (2) EA. PROVIDE FLOOR DRAIN & UTILITIES (INCLUDES EXHAUST TO EXTERIOR)
- 12 EPOXY FLOOR



FILE PATH: C:\Users\cavskei\OneDrive - City of Houston\Desktop\Design MGR\FEED\_TSU Hangar\230731\_TSU\_detached.rvt  
 HAS FILE:  
 PLOT DATE:  
 DOA DWG FILE:  
 OLD DOA No.:

DESIGNER PROJECT No.:

PROJECT STATUS:

**BRIDGING DOCUMENTS**

**REVISIONS**

No.	DESCRIPTION	DATE	BY

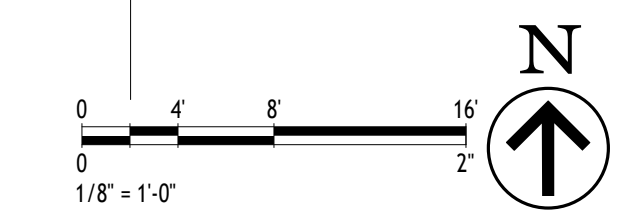
DESIGNER: RP / SK  
 DRAWN BY: SK  
 CHECKED BY: RP  
 ISSUE DATE: 08/03/23  
 APPROVED BY: GO  
 APPROVAL DATE:

DIRECTOR  
 of  
 HOUSTON AIRPORT SYSTEM

Review/ Approval Category	
Approved For Construction	

SHEET NAME: ARCHITECTURAL FLOOR PLAN\_HANGAR

SHEET No. A102 SCALE: 1/8" = 1'-0"  
 SHEET SIZE: 22"x34" ANSI-D



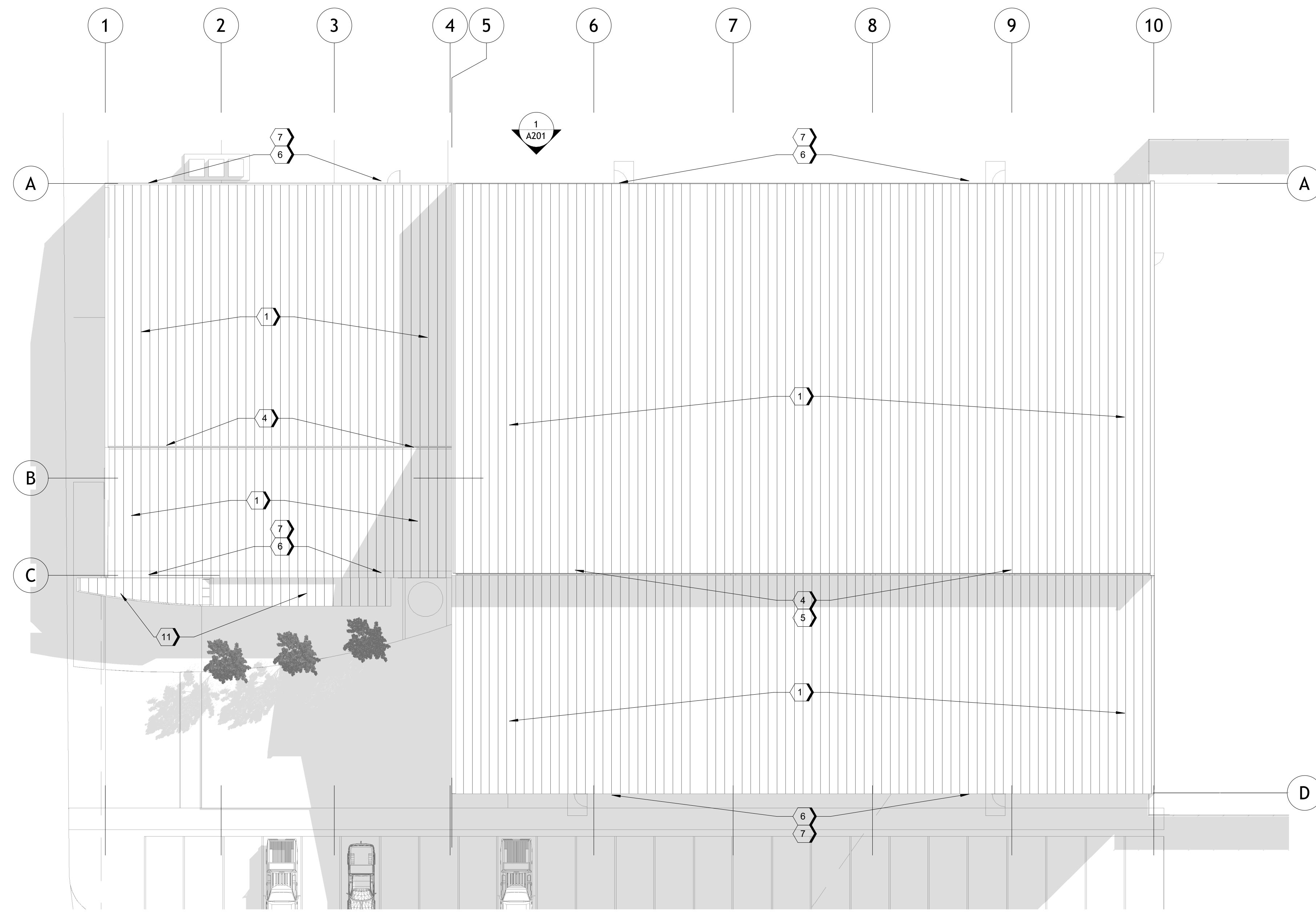




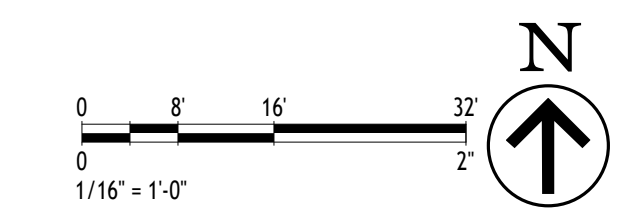
ELLINGTON AIRPORT  
**TSU FLIGHT ACADEMY**  
 C.I.P. No. PN1030 A.I.P. No.  
 C.O.H. No. D.O.A No.

**KEY NOTES EXT & SECTIONS**

- 1 METAL ROOFING
- 2 METAL SIDING (TYPE A)
- 3 METAL SIDING (TYPE B)
- 4 CLERESTORY WINDOWS
- 5 LOUVERS
- 6 CONTINUOUS GUTTER
- 7 DOWNSPOUTS (MAX 40' APART)
- 8 WINDOWS
- 9 INDUSTRIAL FAN
- 10 PERSONNEL DOOR (HM)
- 11 ENTRY CANOPY
- 12 SIGNAGE



1 ROOF @ HANGAR & ACADEMY  
 1/16" = 1'-0"



DESIGNER PROJECT No.:

PROJECT STATUS:  
**BRIDGING DOCUMENTS**

**REVISIONS**

No.	DESCRIPTION	DATE	BY

DESIGNER: RP / SK  
 DRAWN BY: SK  
 CHECKED BY: RP  
 ISSUE DATE: 08/03/23  
 APPROVED BY: GO  
 APPROVAL DATE:

DIRECTOR  
 of  
 HOUSTON AIRPORT SYSTEM

Review/ Approval Category	
Approved For Construction	

SHEET NAME: ARCHITECTURAL ROOF PLAN

SHEET No. A103 SCALE: 1/16" = 1'-0"

SHEET SIZE: 22"x34" ANSI-D

FILE PATH: C:\Users\cavskeri\OneDrive - City of Houston\Desktop\DESIGN MGR\EFD\_TSU Hangar\230731\_TSU\_detached.rvt

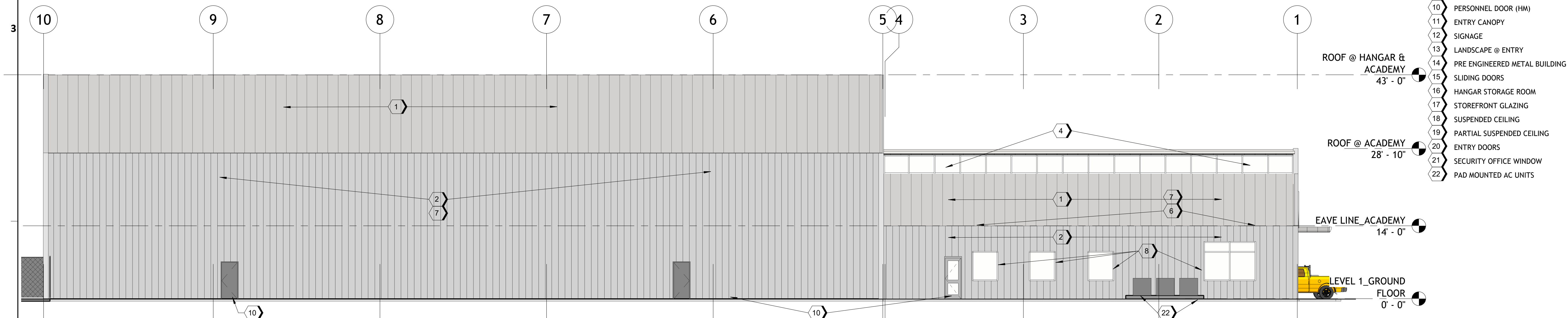
HAS FILE:

PLOT DATE:  
 DOA DWG FILE:  
 OLD DOA No.:

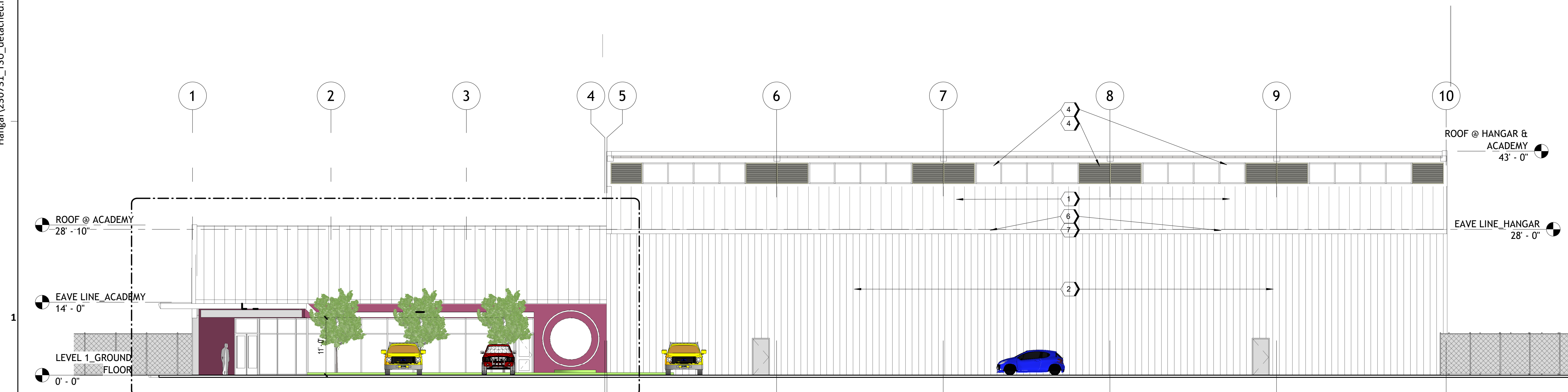


**KEY NOTES EXT & SECTIONS**

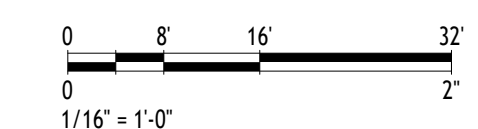
- 1 METAL ROOFING
- 2 METAL SIDING (TYPE A)
- 3 METAL SIDING (TYPE B)
- 4 CLERESTORY WINDOWS
- 5 LOUVERS
- 6 CONTINUOUS GUTTER
- 7 DOWNSPOUTS (MAX 40' APART)
- 8 WINDOWS
- 9 INDUSTRIAL FAN
- 10 PERSONNEL DOOR (HM)
- 11 ENTRY CANOPY
- 12 SIGNAGE
- 13 LANDSCAPE @ ENTRY
- 14 PRE ENGINEERED METAL BUILDING
- 15 SLIDING DOORS
- 16 HANGAR STORAGE ROOM
- 17 STOREFRONT GLAZING
- 18 SUSPENDED CEILING
- 19 PARTIAL SUSPENDED CEILING
- 20 ENTRY DOORS
- 21 SECURITY OFFICE WINDOW
- 22 PAD MOUNTED AC UNITS



1 NORTH ELEVATION  
3/32" = 1'-0"



2 SOUTH ELEVATION  
3/32" = 1'-0"



DESIGNER PROJECT No.:

PROJECT STATUS:

**BRIDGING DOCUMENTS**

**REVISIONS**

No.	DESCRIPTION	DATE	BY

DESIGNER: RP / SK  
 DRAWN BY: SK  
 CHECKED BY: RP  
 ISSUE DATE: 08/03/23  
 APPROVED BY: GO  
 APPROVAL DATE:

DIRECTOR  
 of  
 HOUSTON AIRPORT SYSTEM

Review/ Approval Category	
Approved For Construction	


SHEET NAME: ARCHITECTURAL BUILDING ELEVATIONS

SHEET No. A201 SCALE: 3/32" = 1'-0"

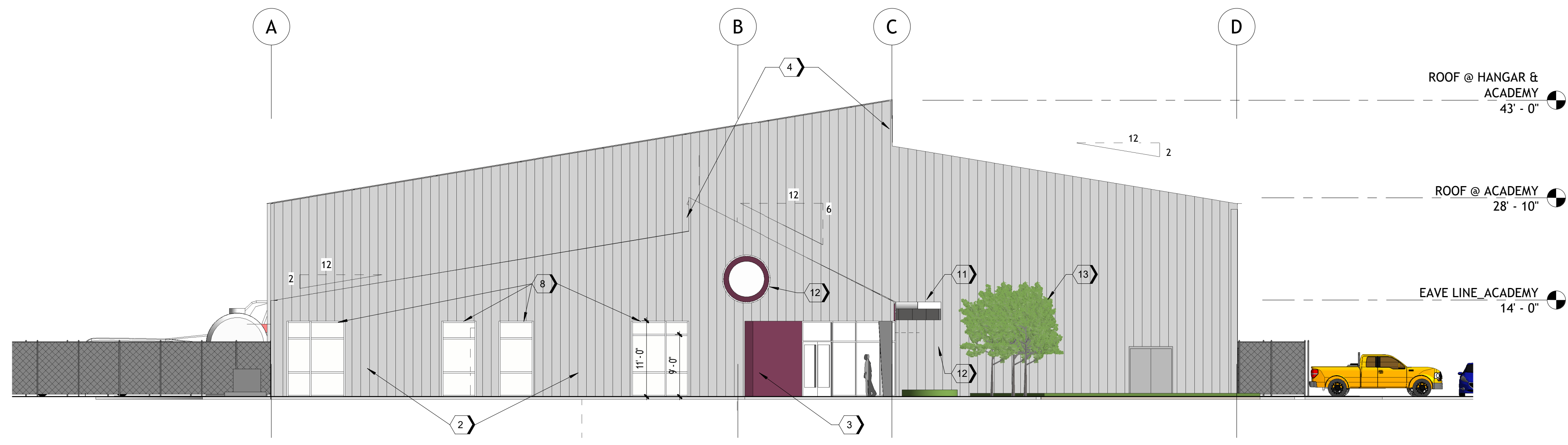
SHEET SIZE: 22"x34" ANSI-D

FILE PATH: C:\Users\cavskel\OneDrive - City of Houston\Desktop\Design MGR\EFD\_TSU Hangar\230731\_TSU\_detached.rvt  
 HAS FILE:  
 PLOT DATE:  
 DOA DWG FILE:  
 OLD DOA No.:

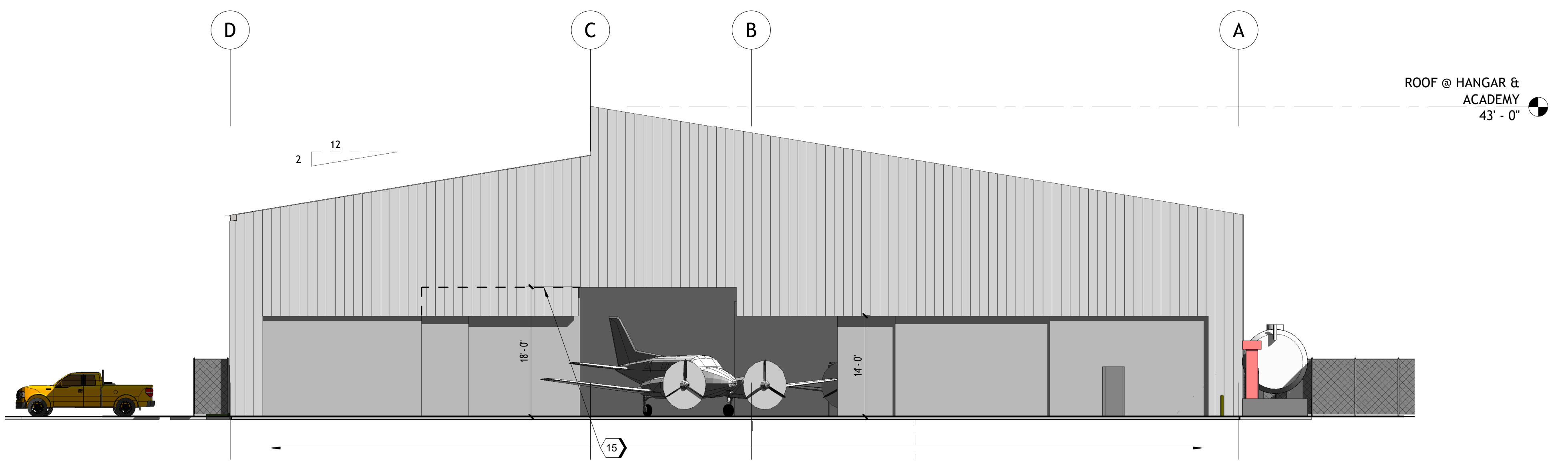


**KEY NOTES EXT & SECTIONS**

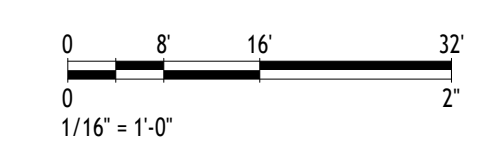
- 1 METAL ROOFING
- 2 METAL SIDING (TYPE A)
- 3 METAL SIDING (TYPE B)
- 4 CLERESTORY WINDOWS
- 5 LOUVERS
- 6 CONTINUOUS GUTTER
- 7 DOWNSPOUTS (MAX 40' APART)
- 8 WINDOWS
- 9 INDUSTRIAL FAN
- 10 PERSONNEL DOOR (HM)
- 11 ENTRY CANOPY
- 12 SIGNAGE
- 13 LANDSCAPE @ ENTRY
- 14 PRE ENGINEERED METAL BUILDING
- 15 HANGAR SLIDING DOORS. 14' HIGH TYPICAL W/1 SECTION 18' HIGH.
- 16 HANGAR STORAGE ROOM
- 17 STOREFRONT GLAZING
- 18 SUSPENDED CEILING
- 19 PARTIAL SUSPENDED CEILING
- 20 ENTRY DOORS
- 21 SECURITY OFFICE WINDOW



1 WEST ELEVATION  
3/32" = 1'-0"



2 EAST ELEVATION  
3/32" = 1'-0"



DESIGNER PROJECT No.:

PROJECT STATUS:  
**BRIDGING DOCUMENTS**

**REVISIONS**

No.	DESCRIPTION	DATE	BY

DESIGNER:	RP / SK
DRAWN BY:	SK
CHECKED BY:	RP
ISSUE DATE:	08/03/23
APPROVED BY:	GO
APPROVAL DATE:	

DIRECTOR  
of  
HOUSTON AIRPORT SYSTEM

Review/ Approval Category	
Approved For Construction	

SHEET NAME: ARCHITECTURAL BUILDING ELEVATIONS

SHEET No.	A202	SCALE:	3/32" = 1'-0"
-----------	------	--------	---------------

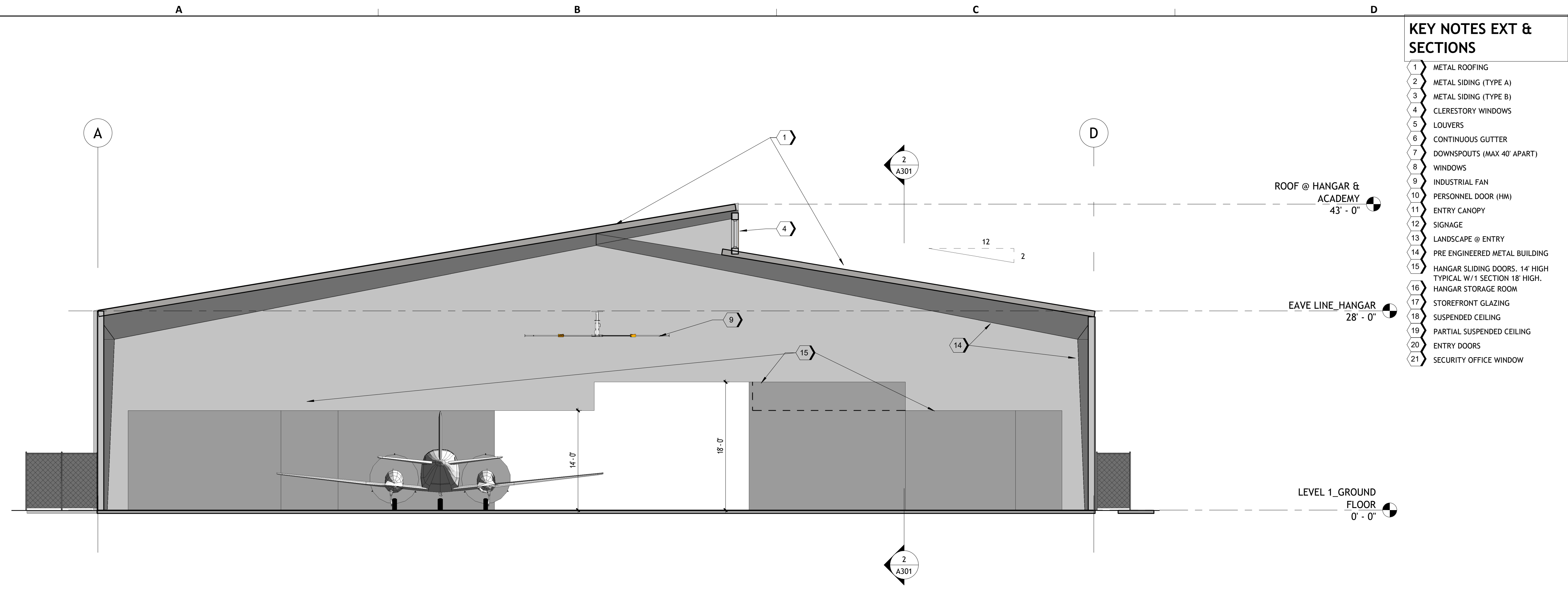
SHEET SIZE: 22"x34" ANSI-D

FILE PATH: C:\Users\cavskel\OneDrive - City of Houston\Desktop\DESIGN MGR\EFD\_TSU Hangar\230731\_TSU\_detached.rvt  
 HAS FILE:  
 PLOT DATE:  
 DOA DWG FILE:  
 OLD DOA No.:

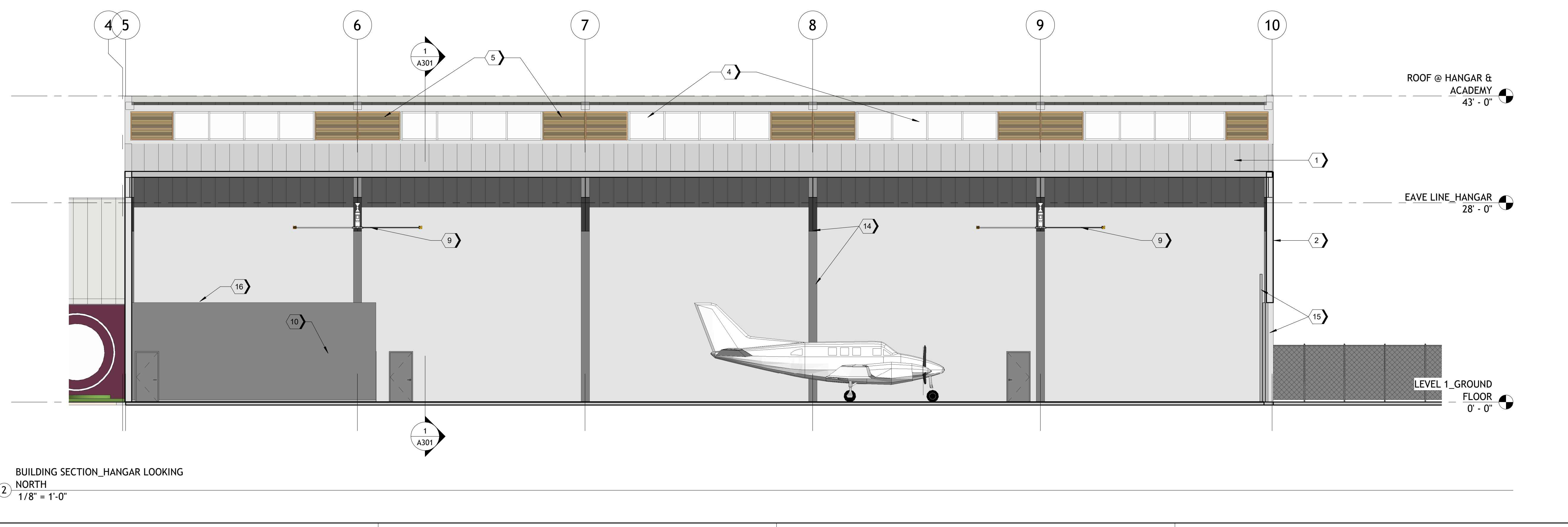


**KEY NOTES EXT & SECTIONS**

- 1 METAL ROOFING
- 2 METAL SIDING (TYPE A)
- 3 METAL SIDING (TYPE B)
- 4 CLERESTORY WINDOWS
- 5 LOUVERS
- 6 CONTINUOUS GUTTER
- 7 DOWNSPOUTS (MAX 40' APART)
- 8 WINDOWS
- 9 INDUSTRIAL FAN
- 10 PERSONNEL DOOR (HM)
- 11 ENTRY CANOPY
- 12 SIGNAGE
- 13 LANDSCAPE @ ENTRY
- 14 PRE ENGINEERED METAL BUILDING
- 15 HANGAR SLIDING DOORS, 14' HIGH TYPICAL W/1 SECTION 18' HIGH. HANGAR STORAGE ROOM
- 16 HANGAR STORAGE ROOM
- 17 STOREFRONT GLAZING
- 18 SUSPENDED CEILING
- 19 PARTIAL SUSPENDED CEILING
- 20 ENTRY DOORS
- 21 SECURITY OFFICE WINDOW



1 BUILDING SECTION\_HANGAR LOOKING EAST  
 1/8" = 1'-0"



2 BUILDING SECTION\_HANGAR LOOKING NORTH  
 1/8" = 1'-0"

DESIGNER PROJECT No.:  
 PROJECT STATUS:  
**BRIDGING DOCUMENTS**

**REVISIONS**

No.	DESCRIPTION	DATE	BY

DESIGNER: RP/SK  
 DRAWN BY: SK  
 CHECKED BY: RP  
 ISSUE DATE: 08/03/23  
 APPROVED BY: GO  
 APPROVAL DATE:

DIRECTOR  
 of  
 HOUSTON AIRPORT SYSTEM

Review/Approval Category	
Approved For Construction	

--	--

SHEET NAME: ARCHITECTURAL BUILDING SECTIONS

SHEET No. A301 SCALE: 1/8" = 1'-0"

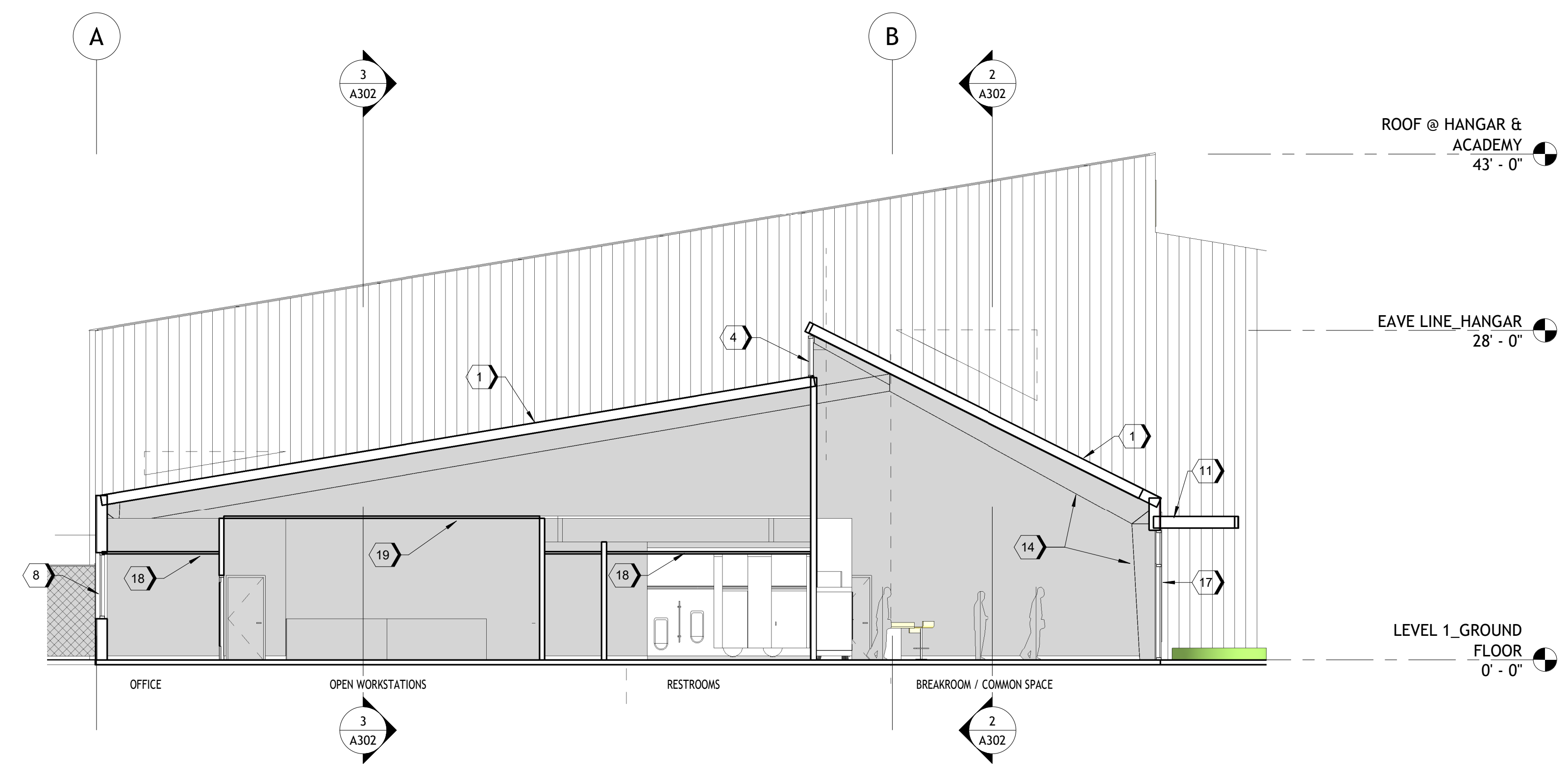
SHEET SIZE: 22"x34" ANSI-D

FILE PATH: C:\Users\cavskeri\OneDrive - City of Houston\Desktop\Design MGR\EFD\_TSU Hangar\230731\_TSU\_detached.rvt  
 HAS FILE:  
 PLOT DATE:  
 DOA DWG FILE:  
 OLD DOA No.:

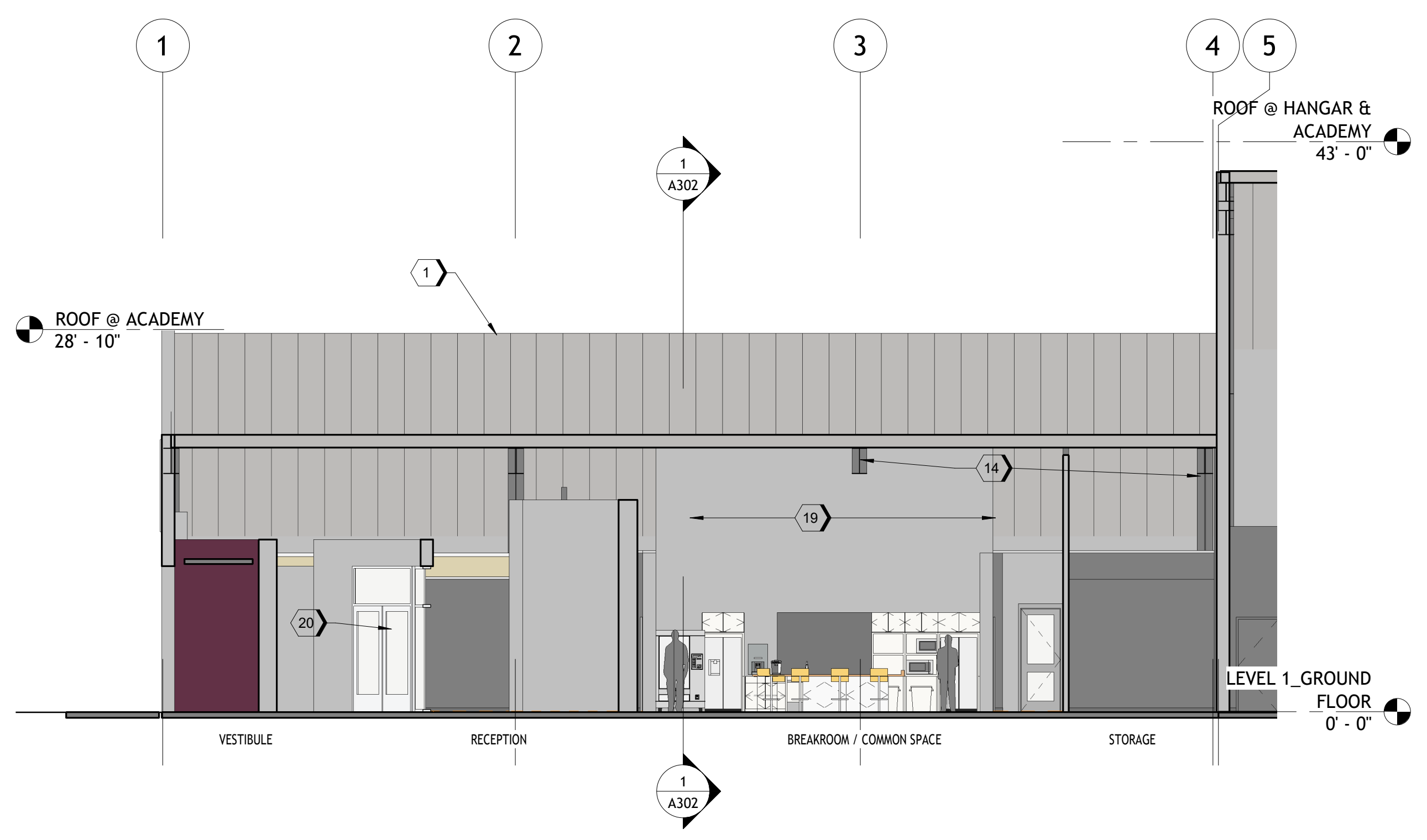


**KEY NOTES EXT & SECTIONS**

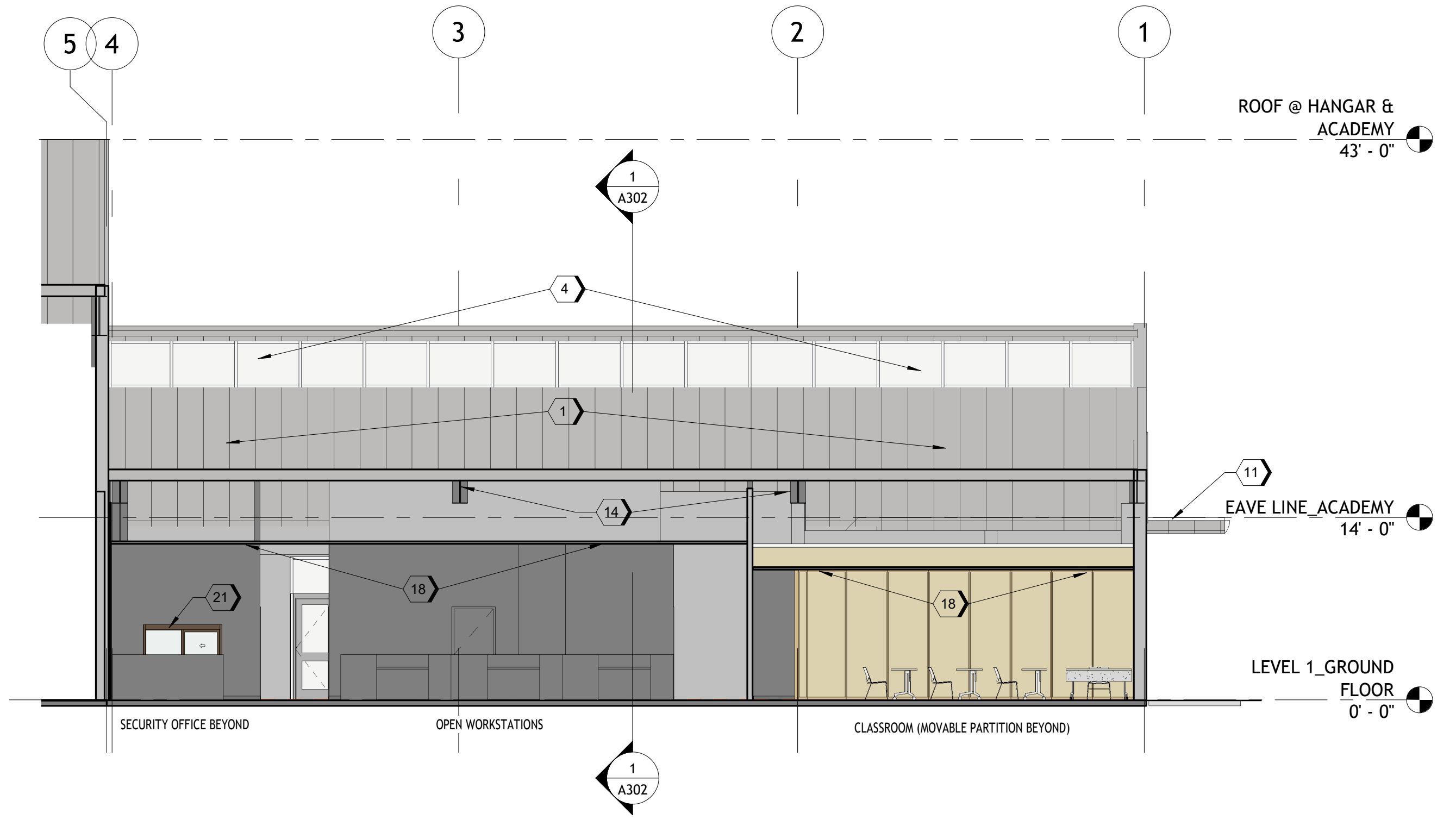
- 1 METAL ROOFING
- 2 METAL SIDING (TYPE A)
- 3 METAL SIDING (TYPE B)
- 4 CLERESTORY WINDOWS
- 5 LOUVERS
- 6 CONTINUOUS GUTTER
- 7 DOWNSPOUTS (MAX 40' APART)
- 8 WINDOWS
- 9 INDUSTRIAL FAN
- 10 PERSONNEL DOOR (HM)
- 11 ENTRY CANOPY
- 12 SIGNAGE
- 13 LANDSCAPE @ ENTRY
- 14 PRE ENGINEERED METAL BUILDING
- 15 SLIDING DOORS
- 16 HANGAR STORAGE ROOM
- 17 STOREFRONT GLAZING
- 18 SUSPENDED CEILING
- 19 PARTIAL SUSPENDED CEILING
- 20 ENTRY DOORS
- 21 SECURITY OFFICE WINDOW



BUILDING SECTION\_ACADEMY LOOKING EAST  
1  
1/8" = 1'-0"



BUILDING SECTION\_ACADEMY LOOKING NORTH  
2  
1/8" = 1'-0"



BUILDING SECTION\_ACADEMY LOOKING SOUTH  
3  
1/8" = 1'-0"

DESIGNER PROJECT No.:

PROJECT STATUS:  
**BRIDGING DOCUMENTS**

**REVISIONS**

No.	DESCRIPTION	DATE	BY

DESIGNER:	RP/SK
DRAWN BY:	SK
CHECKED BY:	RP
ISSUE DATE:	08/03/23
APPROVED BY:	GO
APPROVAL DATE:	

DIRECTOR  
of  
HOUSTON AIRPORT SYSTEM

Review/ Approval Category	
Approved For Construction	

SHEET NAME:	ARCHITECTURAL BUILDING SECTIONS
SHEET No.	A302
SCALE:	1/8" = 1'-0"

SHEET SIZE: 22"x34" ANSI-D

FILE PATH: C:\Users\cavskel\OneDrive - City of Houston\Desktop\Design MGR\EFD\_TSU Hangar\230731\_TSU\_detached.rvt  
 HAS FILE:  
 PLOT DATE:  
 DOA DWG FILE:  
 OLD DOA No.:

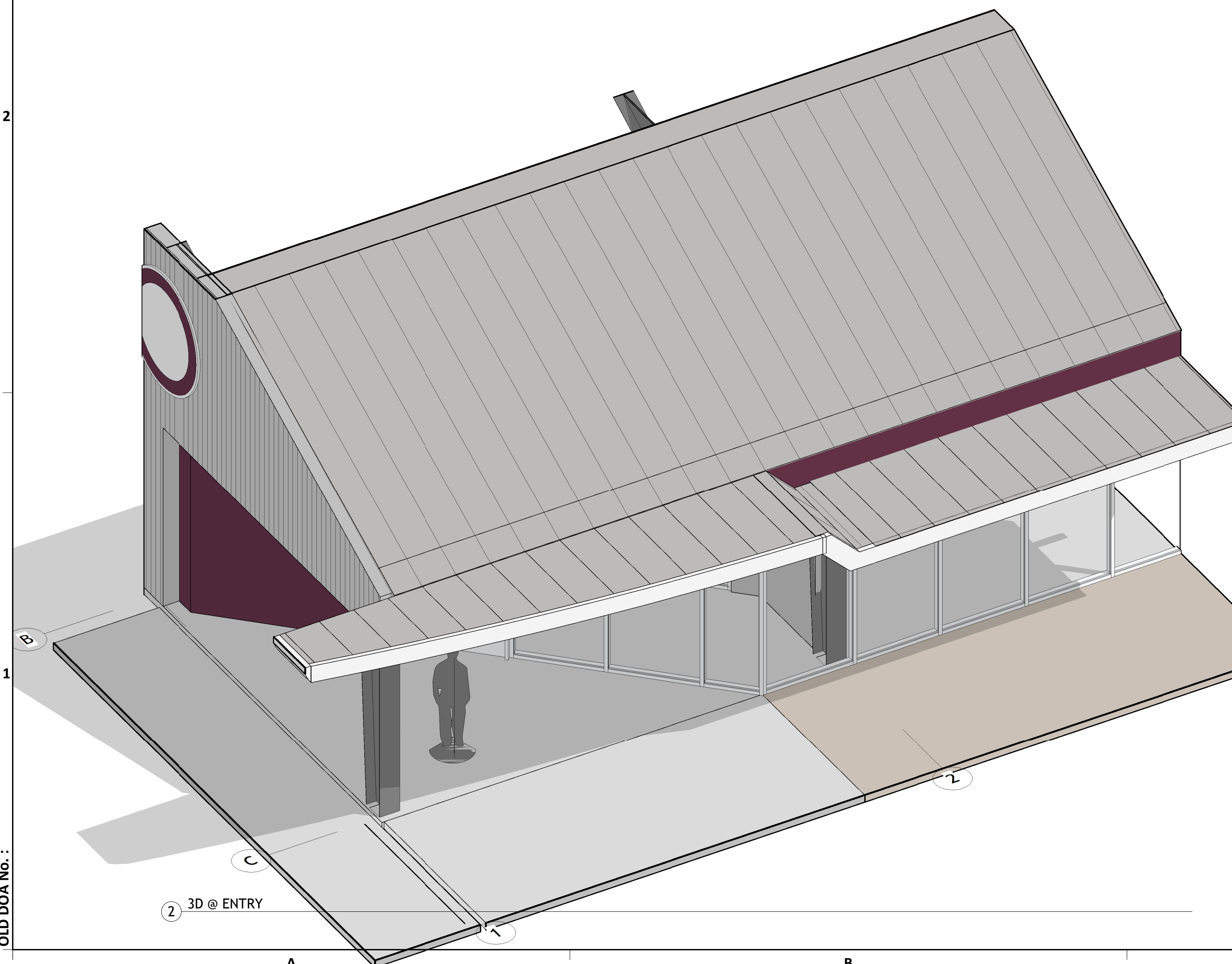


**KEY NOTES EXT & SECTIONS**

- 1 METAL ROOFING
- 2 METAL SIDING (TYPE A)
- 3 METAL SIDING (TYPE B)
- 4 CLERESTORY WINDOWS
- 5 LOUVERS
- 6 CONTINUOUS GUTTER
- 7 DOWNSPOUTS (MAX 40' APART)
- 8 WINDOWS
- 9 INDUSTRIAL FAN
- 10 PERSONNEL DOOR (HM)
- 11 ENTRY CANOPY
- 12 SIGNAGE
- 13 LANDSCAPE @ ENTRY
- 14 PRE ENGINEERED METAL BUILDING
- 15 SLIDING DOORS
- 16 HANGAR STORAGE ROOM
- 17 STOREFRONT GLAZING
- 18 SUSPENDED CEILING
- 19 PARTIAL SUSPENDED CEILING
- 20 ENTRY DOORS
- 21 SECURITY OFFICE WINDOW



1 South - Architectural - Callout 1  
 3/16" = 1'-0"



2 3D @ ENTRY



3 PERSPECTIVE VIEW @ ENTRY

DESIGNER PROJECT No.:  
 PROJECT STATUS:  
**BRIDGING DOCUMENTS**

**REVISIONS**

No.	DESCRIPTION	DATE	BY

DESIGNER: RP / SK  
 DRAWN BY: SK  
 CHECKED BY: RP  
 ISSUE DATE: 08/03/23  
 APPROVED BY: GO  
 APPROVAL DATE:

DIRECTOR  
 of  
 HOUSTON AIRPORT SYSTEM

Review/ Approval Category	
Approved For Construction	

SHEET NAME: ARCHITECTURAL ENLARGED VIEWS

SHEET No. A401 SCALE: 3/16" = 1'-0"

SHEET SIZE: 22"x34" ANSI-D

FILE PATH: C:\Users\cavskeri\OneDrive - City of Houston\Desktop\Design MGR\EFD\_TSU Hangar\230731\_TSU\_detached.rvt  
 HAS FILE:  
 PLOT DATE:  
 DOA DWG FILE:  
 OLD DOA No.: